

Amica

OPERATING INSTRUCTIONS EN

IO-WMS-2992
(03.2023/1)

WTP 477 031



ONLY USE THE APPLIANCE WHEN YOU HAVE
READ AND UNDERSTAND THE OPERATING
INSTRUCTIONS

DRYERS

CONTENTS

WE ARE ENVIRONMENTALLY FRIENDLY	3
BASIC INFORMATION	7
SAFETY AND GARMENT CARE LABELS	8
INSTALL THE APPLIANCE	19
DESCRIPTION OF THE APPLIANCE	26
MAINTENANCE AND CLEANING	30
TROUBLESHOOTING	35
SPECIFICATIONS	38

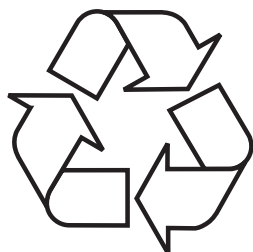
WE ARE ENVIRONMENTALLY FRIENDLY

For many years, Amica has consistently pursued pro-ecological policy. Concern for the environment is as important for us as the use of modern technology.

The development of technology has enabled our factories to become more environmentally friendly – we use less and less water, electricity and less waste water and solid waste is generated during production.

A lot of attention is paid to materials used in production. We strive to use only those that do not contain harmful substances and make recycling and safe disposal possible after use.

UNPACKING



During transportation, protective packaging was used to protect the appliance against any damage. After unpacking, please dispose of all elements of packaging in a way that will not cause damage to the environment.

All materials used for packaging the appliance are environmentally friendly; they are 100% recyclable and are marked with the appropriate symbol.

Important! Packaging materials (bags, polyethylene, polystyrene, etc.) should be kept away from children during unpacking.

DISPOSAL OF OLD APPLIANCE



In accordance with European Directive 2012/19/EU and local legislation regarding used electrical and electronic goods, this appliance is marked with the symbol of the crossed-out waste container. This marking indicates that the appliance must not be disposed

of together with other household waste after it has been used.

The user is obliged to hand it over to waste collection centre collecting used electrical and electronic goods. The collectors, including local collection points, shops and local authority departments provide recycling schemes.

Proper handling of used electrical and electronic goods helps avoid environmental and health hazards resulting from the presence of dangerous components and the inappropriate storage and processing of such goods.

Dear customer!

Thank you for choosing an Amica product. For years we have delivered high-quality appliances, so that household chores become a real pleasure. Before being packaged and leaving the manufacturer, this appliance was thoroughly checked with regard to safety and functionality. We also endeavour to make sure that modern technology in Amica products always goes hand in hand with a unique design.

Before using the appliance, please carefully read these Operating Instructions. Follow these instructions to avoid improper use and ensure long and reliable operation of the appliance. Learn the principles of the safe use to avoid accidents.

Store these operating instructions in a safe place to use them for reference whenever needed. These Operating Instructions contain all the necessary information that will make the use of your Amica appliance simple and fun. We also encourage you to find out more about other Amica appliances.

We hope using your new appliance is a pleasure.

Amica

BASIC INFORMATION



This appliance is intended for household use only for drying textiles and clothing.

Level the appliance before connecting it to a wall socket. The manufacturer reserves the right to introduce changes, which do not affect operation of the appliance.

Use

- Carefully read the instructions below before using the appliance.
- Never use the appliance outdoors or anywhere the temperature may fall below freezing.
- The appliance should not be operated by children or anyone who has not read these operating instructions.



Temperature below 0°C can damage the appliance! In the event of the appliance being stored or transported in sub-zero temperatures, it should be left to acclimatise in a temperature above 0°C for 8 hours before being used.

MANUFACTURER'S DECLARATION

The manufacturer hereby declares that this product meets the requirements of the following European directives:

- Low Voltage Directive **2014/35/EU**,
- Electromagnetic Compatibility (EMC) Directive **2014/30/EE**,

and has been marked with the CE symbol and issued with a declaration of compliance made available to market regulators.

	<p>This appliance should not be used by children under 8 years of age, persons with reduced physical or mental capabilities, and persons who do not have sufficient skills to use this type of appliance. Such persons should be offered proper supervision or instructions on safe handling of appliance and related risks. Children must not play with the appliance or perform any maintenance-related activities. Children under 3 years of age must be kept away from the appliance unless continuously supervised.</p>
	<p>Children of less than 3 years should be kept away unless continuously supervised.</p>
	<p>Before installation, check the appliance for visible signs of damage. Never install or use a damaged appliance.</p>
	<p>The tumble dryer is intended for home use indoors. The warranty will be void if the appliance is used commercially.</p>

SAFETY AND GARMENT CARE LABELS

	Only dry clothing whose label indicates that it can be tumble dried.
	The manufacturer is not responsible for damage resulting from incorrect transport or use.
	Do not allow floor coverings to block the ventilation openings.
	Repairs to the appliance may only be carried out by an authorized service centre. The manufacturer will not liable any damage resulting from repairs carried out by unauthorized persons.
	Warning: Never spray or pour water on the dryer to clean it! Danger of electric shock.
	If the appliance is to be installed under the countertop leave at least 3 cm clearance between the side and rear walls of the appliance.

SAFETY AND GARMENT CARE LABELS

	Do not damage the cord or plug.
	Keep pets away from the appliance.
	Fabric softeners or similar products should be used as recommended by the manufacturer.
	Take all items such as lighters and matches, out of your pocket.
	Place the appliance on a stable, flat surface.
	Use the dryer in a dust-free environment, in a well-ventilated room.
	The clearance between the dryer and the floor must not be reduced by a carpet, wood or tape.
	Do not block the ventilation openings on the dryer base.
	When the dryer is installed, all connections must remain securely fastened. When installing the dryer, make sure that the back wall does not lean against anything (e.g. tap, socket).

SAFETY AND GARMENT CARE LABELS

	Be careful when moving the machine, because it is heavy. Always wear protective gloves.
	Always install the product against a wall.
	The rear wall of the appliance should be positioned against the wall.
	When the appliance is placed on a stable surface, use a spirit level to check that it is fully levelled. If not, adjust the legs to level the appliance. Level the appliance each time it is moved.
	Do not place the dryer on the power cord.
	To avoid the risk of fire or electric shock, do not use extension cords, adapters or multi-plug adapters to connect the dryer to the power supply.
	Do not allow unattended children to play near the appliance.
	Children may lock themselves in the appliance, which may result in death.

SAFETY AND GARMENT CARE LABELS

	Do not allow children to touch the door glass during appliance operation. The door surface becomes very hot and can cause scalding.
	Keep packaging elements out of the reach of children.
	Poisoning and irritation may occur after swallowing detergents and cleaning agents and when they come into contact with the skin and eyes.
	Keep cleaning products out of the reach of children. Electrical appliances are dangerous for children.
	Keep children away from an operating appliance!
	Enable Child Lock to prevent children from interrupting the drying cycle or making any changes to the running drying programme.
	Do not allow children to sit / climb on the appliance or get inside drum.

	To avoid the risk of fire, NEVER tumble dry the following items of clothing and products:
	Do not dry dirty laundry.
	Laundry contaminated with substances such as cooking oil, acetone, alcohol, petrol, kerosene, stain removers, turpentine, wax and wax removers must be washed in warm water with detergent before drying in the dryer.
	Cleaning cloths and mats containing residue of flammable cleaning agents or acetone, gasoline, diesel oil, stain removers, turpentine, candles, wax, wax removers or other chemicals.
	Textiles containing residues of hairspray, nail polish removers and similar substances.
	Textiles cleaned with industrial chemicals (e.g. after dry cleaning).

SAFETY AND GARMENT CARE LABELS

	Textiles containing any kind of foam, sponge, rubber or parts or accessories resembling rubber. These include latex foam sponges, swimming caps, waterproof fabrics, close fitting clothes and foam pillows.
	Items with padding and damaged garments (pants or jackets). Foam spilling out of these items may catch fire during the drying process.
	Using the dryer in an environment with dust, flour or coal dust lead to an explosion.
	Items with padding and damaged garments (pants or jackets). Foam spilling out of these items may catch fire during the drying process.
	NOTE: Do not load any underwear with metal reinforcements in the tumble dryer. If the metal reinforcements loosen and break during drying the dryer may be damaged.

	This appliance contains the environmentally friendly but flammable R290 gas. Keep open flame and sources of ignition away from the product.
	NOTE: Do not turn off the dryer before the drying cycle ends unless the laundry will be quickly removed and hung out in order to dissipate heat.
	NOTE: Make sure that the animals do not get inside the dryer. Check the inside of the dryer before switching it on.
	NOTE: Laundry may overheat when you cancel a programme or in the event of a power outage while the dryer is operating. The concentration of heat can cause spontaneous ignition, so you should activate the Refresh programme to cool down or quickly remove all the laundry from the dryer and hang the laundry out to dissipate the heat.

SAFETY AND GARMENT CARE LABELS

	The power source must be grounded. The grounding cable must be buried underground and must not be connected to the utilities network, such as water pipe or gas pipe. Grounding and neutral wire and must be distinguished and may not be connected together.
	The power cord must comply with IEC standards and withstand current greater than 10A. If these requirements are not met, you should immediately adapt your domestic electrical system to ensure the safety of your household.
	This appliance is intended for use in residential homes only; place the appliance on an even and stable surface.
	Do not lean or sit on the dryer door. The dryer may tip over.
	NOTE: Never use the dryer without a lint filter or with a damaged filter.
	The lint filters should be cleaned after each use.
	Lint filters should be dried after wet cleaning. Wet filters can cause a malfunction during the drying process.

















	Do not allow lint to accumulate near the tumble dryer (does not apply to appliances with exhaust vent outside the building).
	IMPORTANT: The clearance between the dryer and the floor must not be reduced by a carpet, wood or cover, otherwise, sufficient volume of air cannot be supplied to the appliance.
	Do not install the tumble dryer in a room where there is a risk of freezing temperature. Freezing temperature negatively affects dryer performance. Condensed water freezing in the pump and hose can cause damage.
	Do not place the dryer on the washing machine, without a special washer dryer stacking kit. (To install the dryer on top of a washing machine, you must purchase a suitable washer dryer stacking kit. To avoid any risk your tumble dryer must be installed by the manufacturer's service technician or other suitably qualified person).

UNDERSTANDING THE SYMBOLS ON CLOTHES LABELS

Note!

- Never overload the appliance.
- Do not dry wet clothes dripping water. This may damage the dryer or cause a fire.

Make sure that the clothing is suitable for tumble drying and pay attention to the following symbols:

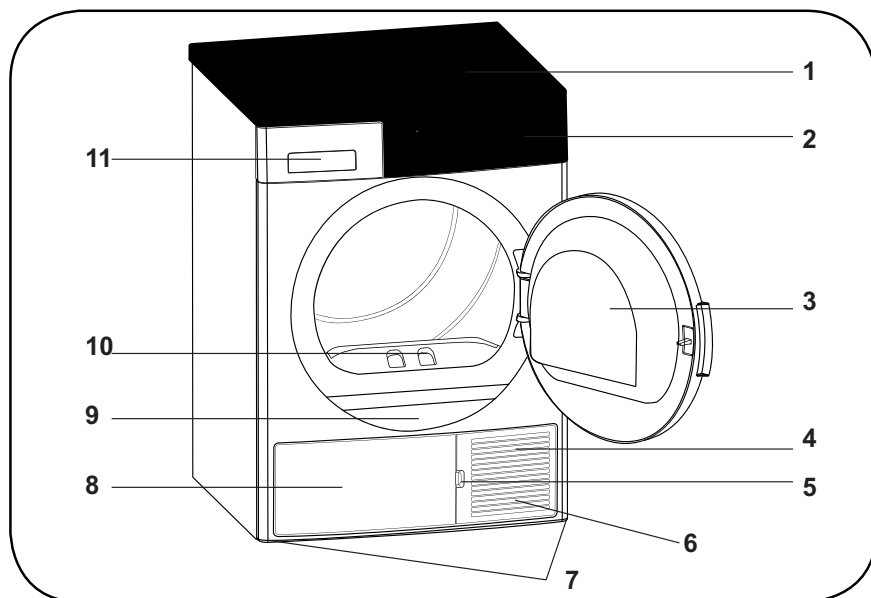
			
Tumble dry, normal	Tumble dry, permanent press	Tumble dry, gentle	Do not tumble dry
			
Do not dry	Do not dry clean	Dry clean	Tumble dry, normal, high heat
			
Tumble dry, normal, medium heat	Tumble dry, normal, low heat	Tumble dry, normal, no heat	Line dry
			
Dry flat	Drip dry	Dry in shade	Dry clean, any solvent other than trichloroethylene



INSTALL THE APPLIANCE

1

Guide to the appliance



Note: Familiarise yourself with the appliance.

1. Top
2. Control Panel
3. Door
4. Base
5. Base access opening
6. Ventilation grates
7. Adjustable feet
8. Bottom cover
9. Name Plate
10. Lint filter
11. Drawer cover

Installation Steps:



NOTE: Do not stack washing machine on the dryer. When installing the dryer on the washing machine pay attention to the following warnings.



NOTE: A dryer can be installed on a washing machine only if the washing machine has the same or greater capacity as the dryer.

- To install the dryer on the washing machine, use the stacking kit (to stack the dryer on top of the washer).
- If the dryer is installed on of a washing machine, the total weight of these appliances can be almost 150 kilograms (after loading). Place the appliances on a stable floor with sufficient load carrying capacity!

Amica washing machine and tumble dryer compatibility table					
Tumble dryer (Depth)	Washing machine				
	37-42 cm	42-45 cm	46-49 cm	50-56 cm	57-63 cm
52,5 cm	X	✓	✓	✓	✓
56 cm	X	X	✓	✓	✓
61 cm	X	X	X	✓	✓
64 cm	X	X	X	X	✓



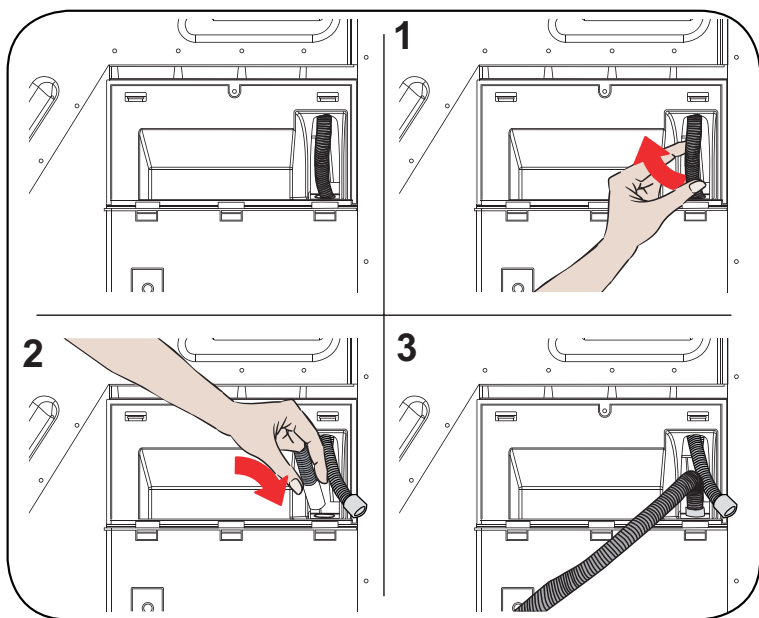
You need a special stacking kit, supplied as an optional accessory, to stack the dryer on to top the washing machine. Contact customer service to purchase the stacking kit. Assembly instructions will be provided with the stacking kit.

Connect water drain (with optional drain hose)

In condenser dyers, condensed water accumulates in the water container during the drying process. Empty the condensed water container after each drying programme. Instead of emptying the water container periodically, you can also use the drain hose provided with the appliance to drain the water directly into the domestic sewer system.

- Pull out the end of the hose at the back of the dryer. Do not use any tools to pull out the hose.
- Insert one end of the drain hose, which is provided with the appliance, into the slot where the hose was stored.
- Attach the other end of the drain hose directly to the sink or domestic sewer system.

■ Connect the drain hose



NOTE: The hose must be connected in such a way that it cannot be disconnected. If the hose is disconnected while draining, water may flood the home.



IMPORTANT: The drain hose should be installed at a height of max. 80 cm.

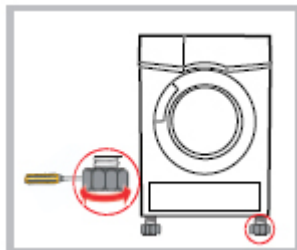


IMPORTANT: Make sure that the drain hose is not kinked, folded or pinched.

4

Levelling

- To ensure that the dryer runs quietly without vibrations, it must be stable and level - use the feet to level the appliance. Level the appliance by adjusting its legs.



- Turn the feet clockwise or counter clockwise until the dryer is level and stable.



Never remove the adjuster feet.

5

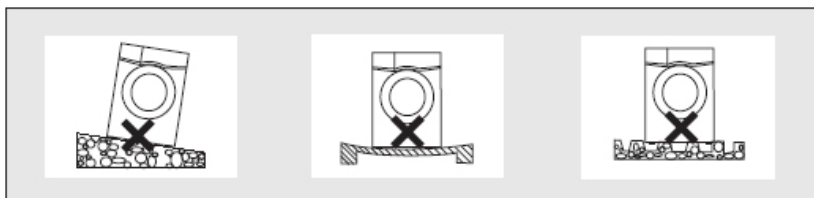
Transport

- Transport with care. Do not lift the appliance by any protruding parts.

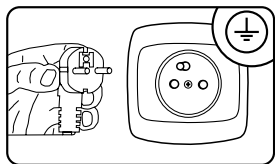
6

Correct installation position

- For convenience, it is recommended to place the appliance near a washing machine.
- The dryer must be installed in a clean place, where dirt does not accumulate. Ensure free air circulation around the appliance. Do not block the front air inlet or air intake grilles at the back of the appliance.
- Set the appliance on a hard and level surface to minimize vibration and noise during operation.
- Never remove the feet of the appliance. Do not restrict the clearance under the appliance by placing it on a high carpet, wooden planks or similar objects. This can lead to the appliance overheating.



Connect appliance to electrical mains



- Electrical wall outlet where the appliance is connected must be in a visible and accessible place,
- Only plug the appliance into a properly installed socket with an earthing pin,
- Do not use an extension cord to connect the appliance,
- if the power cord is damaged, have it replaced by an authorised service technician,
- the electrical system to which the appliance is to be connected must be protected with a 10 A fuse.



IMPORTANT: Using the appliance at low voltage reduces its service life and efficiency.

Prepare laundry for drying



IMPORTANT: Delicate, embroidered, wool / silk fabrics, clothes made of delicate and expensive fabrics, hermetic clothes and tulle curtains are not suitable for tumble drying.



Take all items such as lighters and matches, out of your pocket.



NOTE: The dryer drum and fabrics may be damaged.



- Laundry can get tangled during washing. Separate items of laundry before placing in the dryer.
- Remove all items from the pockets and:
 - Tie belts, apron tapes or use a laundry bag.
 - Fasten zippers, fasteners and snaps, fasten buttons of pillow cases.
- For best drying results, sort the laundry by fabric type and drying programme. Remove latches and similar metal parts from clothing.
- Knitted garments, such as T-shirts and sweatshirts, usually shrink during the first drying. Take advantage of the protection programme.
- Do not overdry the synthetics. This causes creases.
- When washing laundry to be dried, add the amount of fabric softener according to the washing machine manufacturer's instructions.



IMPORTANT: It is not recommended to put more laundry into the dryer than shown beside. When the appliance is overloaded, the drying performance is reduced and the dryer or laundry can be damaged.

Clothing and textiles	Dry weight
Bedsheet (large)	725
Pillow case	240
Bath towel	700
Towel	225
Shirt	190
Cotton T-shirt	200
Jeans pants	650
Gabardine pants	400
T-shirt	120

Before each drying

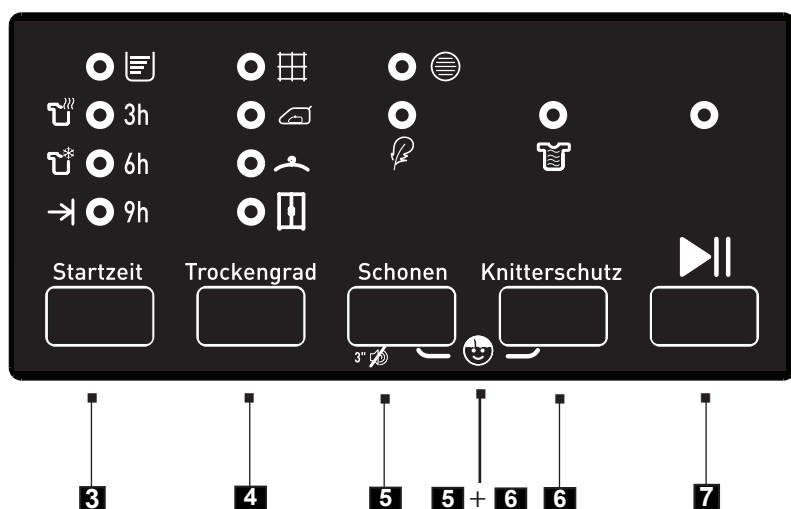
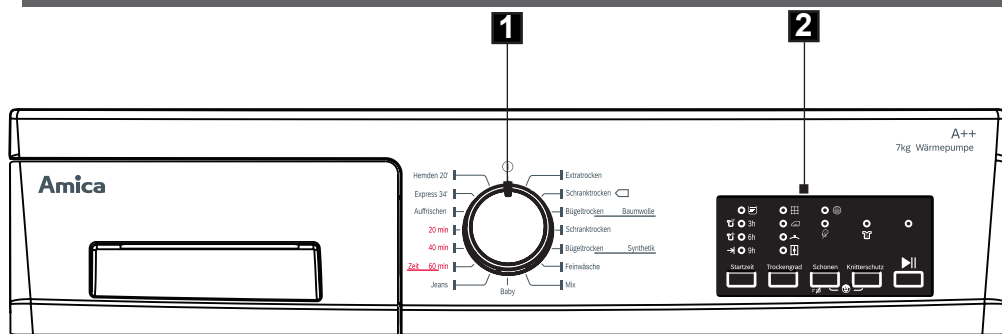
1. Spin the laundry in the washing machine before tumble drying. The high spin speed can reduce the drying time and save energy.
 2. To make sure the drying results are uniform, sort the laundry by fabric type and drying programme.
 3. Before the drying close the locks, hooks and buttons, fasten the belts, etc.
 4. Do not over-dry clothes, as they can easily crease.
 5. Do not dry rubber and elastic materials.
 6. To prevent skin scalding caused by steam or hot appliance components, only open the door after the drying programme has been completed.
 7. To avoid extended drying cycles and increased energy consumption, clean the appliance filters after each use.
 8. Do not dry clothes after chemical cleaning.
 9. Select the correct programme to dry woollen clothing to make the fabric fresh and fluffy.
- Approximate weight of dry clothes (each garment)



Never overload the appliance.

Do not dry wet clothes dripping water. This may damage the dryer or cause a fire.

DISPLAY AND CONTROL PANEL



1. Programme selector dial
2. Display
3. Delay Start
4. Drying Level
5. Delicates
6. Anti-Crease
7. Start/Pause
- 5+6 Child Lock

DISPLAY AND CONTROL PANEL

1

Programme selector knob

- Use the programme selector knob to select the desired drying programme
- Selectable functions: [Delayed start], [Drying level], [Delicates], [Anti-Crease].
- Press the Start/ Pause button

2

Indicators and additional functions



Symbols shown on the display

Water container full indicator	
Clean the lint filter indicator	
Clean the heat exchanger indicator	

3

Additional functions

■ Delayed Start




You can delay the drying programme start from 3, 6, 9 hours. Press the Start / Pause button repeatedly to select the desired delay. The programme will start automatically when the delay has elapsed. Before the delayed programme starts you can activate / deactivate programme options. Press and hold the Delay Start button to cycle through the available delay times.

■ Drying level

There are 3 additional higher drying levels. You can select the desired drying level. Drying levels that can be selected in addition to the standard setting: 1, 2, 3. When selected, the indicator for the appropriate drying level will light up.

Use this function to adjust clothes drying intensity.

You can only activate Drying Level function before the programme starts.

- Press the [Drying Level] to select the drying time.
- The Drying Level function can be used only in [Cotton] [Mix] [Jeans] and [Synthetics] programmes.
- The appliance offers 3 drying levels: Cupboard Dry , Hanger Dry , and Iron Dry  (laundry will be still damp)

When you select "Iron Dry" and the dryer door is not opened after the programme has finished, the 1 hour anti-crease phase will be extended to 2 hours. When you select the "Iron Dry" option you will hear a beep. You can press the same button again to deactivate the option. If you open the door or press Start / Pause during the Anti-crease phase, it will be cancelled.

■ Delicates

Use this programme to dry delicate laundry as shirts, blouses and silk garments at low temperature so that they are ready to wear.

■ Mute beeping

The dryer beeps when you turn the programme selection knob, press buttons and when a programme ends. Press and hold the "Iron Dry" button for 3 seconds to mute the beeping. When you press the button, a beep sounds to indicate that the option has been disabled.

■ Specific Duration Drying

Set the knob to the Specific Duration Drying position and press the options buttons to select options, then press Start / Pause to start the programme. Press and hold the Specific Duration Drying button to cycle through the available delay times.

■ Child Lock

There is a child lock option to avoid changes in the programme flow when keys are pressed during the programme. To activate child lock feature user should press "Delicate" and "Anticrease" buttons simultaneously for 3 sec. When the child lock activated, all keys will be deactivated. Child lock is not automatically deactivated at the end of the program. To deactivate the child lock at end of the programme, set the programme selection knob to "Off" position. Then set programme selection knob to first position. Child lock is still active. To deactivate the child lock, user should press "Delicate" and "Anticrease" buttons simultaneously for 3 sec. When activating/deactivating the child lock, "Delicate and Anticrease" option leds will be blink and an audible warning will be heard. Warning; when the product is running or the child lock is active, if you turn the programme selection knob, you will hear an audible warning. Even if you set the programme knob to another programme, the previous programme will continue running. To select a new programme, you need to deactivate the child lock and then set the programme selection knob.

DISPLAY AND CONTROL PANEL

4

Start a programme

The Start / Pause indicator will flash when you select a programme. To start the programme, press the Start / Pause button. The Start / Pause indicator indicates that the programme has started and the drying indicator lights up.



IMPORTANT: Do not open the door while the programme is running. If you need to open the door, do not keep it open for a long time.

5

Programme sequence

When a programme is running

If you open the door while the programme is running, the appliance switches to standby. To resume the programme, close the door and press the Start / Pause button.

Do not open the door while the programme is running. If you need to open the door, do not keep it open for a long time.



After 15 minutes without user action in selection mode, machine goes to energy-saving mode due to decrease energy consumption. In this model, "---" must blink with 0,5 sec ON, 3 sec OFF during energy-saving mode. At the energy saving mode, "---" led luminosity is reduced. To restart the machine it will be necessary to move selector to OFF and select again the program.

6

End programme

At the end of the programme, the Start / Pause, water container full, clean the lint filter and clean the heat exchanger indicators will light up. You will also hear a beep when the programme ends. You can remove the laundry and prepare the appliance for a new cycle.



IMPORTANT: Clean the lint filter after each drying cycle. Empty the condensed water container after each drying programme.



IMPORTANT: If the laundry is not removed at the end of the programme, the 1-hour Anti-crease phase will be started automatically to prevent creasing. During this phase the drum rotates at regular intervals to prevent creasing.

Drum light

- This appliance features drum LED lighting.
- The light turns on automatically when you open the door. It turns off automatically after some time.
- This is not an adjustable option and you cannot turn the lighting on or off.
- Do not replace or modify the LED lighting.

MAINTENANCE AND CLEANING



IMPORTANT: Do not use industrial chemicals to clean the dryer. Do not use a dryer that has been cleaned with industrial chemicals.

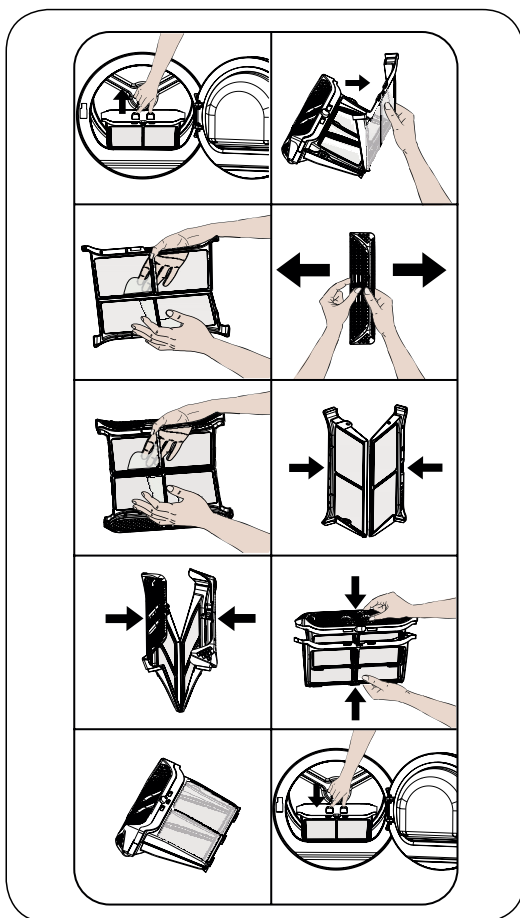
7

Clean the lint filter.

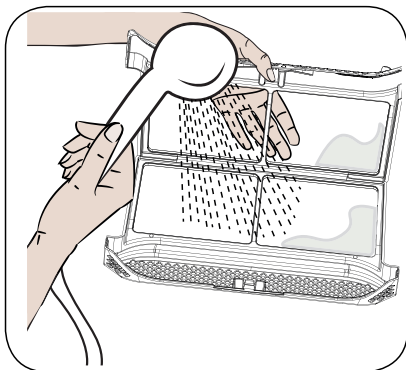
IMPORTANT: DON'T FORGET TO CLEAN THE LINT FILTER AFTER EACH USE.

To clean the lint filters:

- Open the door.
- Pull the lint filters out to remove them.
- Open the outer lint filter
- Clean the outer lint filter by hand or with a soft cloth.
- Open the inner lint filter
- Clean the internal lint filter by hand or with a soft cloth.
- Close the filters and press the tabs
- Place the inner filter inside the outer filter
- Replace the lint filter

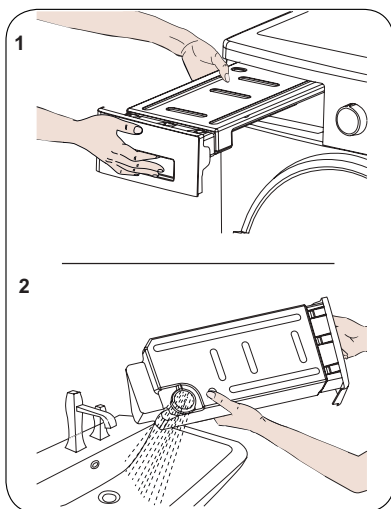


If you use the dryer for an extended time, and a thick layer of lint deposits on the filter surface, remove the lint layer by washing the filter with warm water. Thoroughly dry the filter before replacing it.



8

Empty the water container



- Pull the drawer cover and carefully remove the container.
- Pour out the water from the container.
- If lint accumulates on the water container drain plug, clean it with water.
- Replace the water container.



IMPORTANT: Never remove the water container while the programme is running. Condensed water in the container is not suitable for human consumption.



IMPORTANT: DON'T FORGET TO EMPTY THE WATER CONTAINER AFTER EACH USE.

Clean the heat exchanger

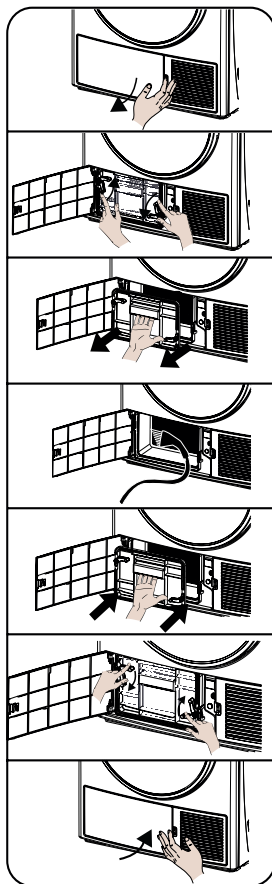


IMPORTANT: Clean the heat exchanger when the “Clean the heat exchanger” warning appears.



IMPORTANT: EVEN IF THE “CLEAN THE HEAT EXCHANGER” INDICATOR IS OFF, CLEAN THE HEAT EXCHANGER AFTER EVERY 30 DRYING CYCLES OR ONCE A MONTH.

- After the drying programme, open the door and wait for the dryer to cool down.
- Open the cover as shown.
- Release the heat exchanger cover by turning it in the direction of the arrows.
- Remove the heat exchanger cover as shown.
- Clean the front surface of the heat exchanger as shown.
- Replace the heat exchanger cover as shown.
- Lock the heat exchanger cover by turning it in the direction of the arrows.
- Close the cover as shown.



Clean the humidity sensor

- The are humidity sensors inside the appliance that detect if the laundry is dry.
To clean the sensors:
- Open the appliance door.
If the appliance is still hot, allow it to cool down.
- Using a soft cloth moistened with vinegar, wipe the metal surfaces of the sensor and dry it.



IMPORTANT: CLEAN THE SENSOR METAL SURFACES 4 TIMES A YEAR.



IMPORTANT: Do not use any metal tools to clean the metal surfaces of the sensor.



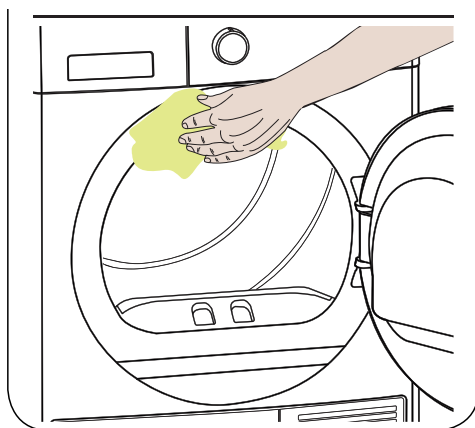
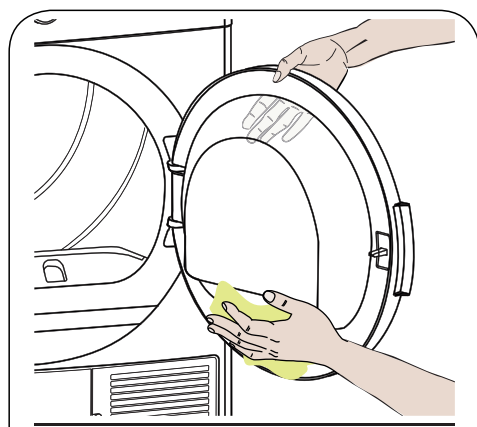
WARNING: Due to the risk of fire and explosion, do not use solvents, cleaning agents, or similar products to clean the sensors.

Clean the inside of the door



IMPORTANT: DO NOT FORGET TO CLEAN THE INSIDE OF THE DOOR AFTER EACH DRYING CYCLE.

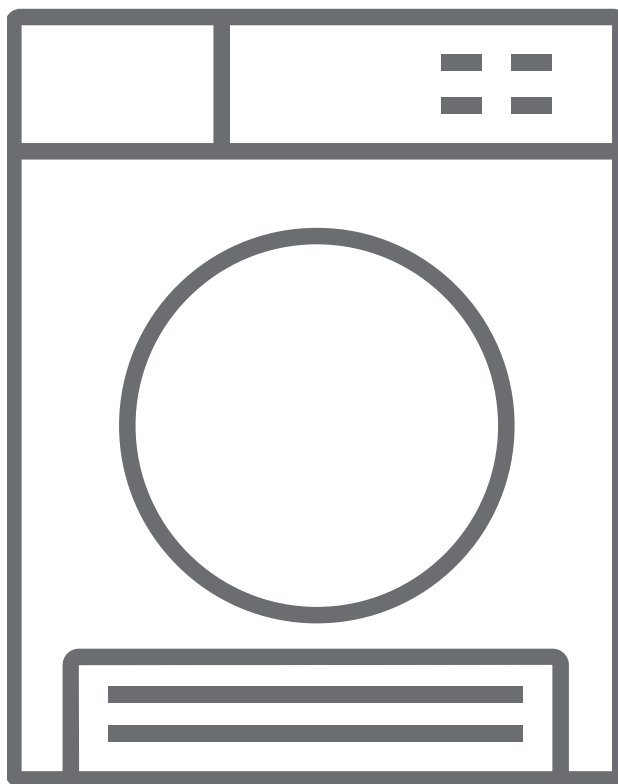
Open the dryer door and clean all internal surfaces and the gasket with a soft, damp cloth.



Clean the dryer




- Remove the plug from wall outlet before cleaning!
- Clean the dryer with a clean damp cloth. Cleaning agents may damage the plastic surfaces and other parts.
- Wear gloves when cleaning.
- Prepare a clean cloth damp with water.
- Clean the door, in particular inside the door window.
- Clean the seals around the front bracket.
- Clear humidity sensor inside the drum.
- Remove all the filters, clean the seals and air ducts. Before using the dryer wipe all the items dry with a soft cloth.



TROUBLESHOOTING

The dryer feature an internal malfunction detection system – a malfunction is indicated by a combination of flashing lights. The most common error codes are shown below.

Display	Probable cause and solution
E03 / 	Empty the water container; if the problem persists, contact the nearest authorized service centre.
E04	Contact the nearest authorized service centre.
E05	Contact the nearest authorized service centre.
E06	Contact the nearest authorized service centre.
E07	Contact the nearest authorized service centre.
E08	There may be mains voltage fluctuations. Wait until the mains voltage is suitable for the appliance.



- Repairs may only be performed by an authorized technician.
- Before contacting customer support, complete all the steps given in the operating instructions to troubleshoot the problem.
- If other messages appear on the display and the dryer does not work, contact your contact your local service centre.
- You could be charged for the service call even during the warranty period.

PROBLEM	REASON	SOLUTION
The drying process takes a long time.	The surface of the lint filter might be clogged.	Wash the filter with lukewarm water.
	The heat exchanger might be clogged.	Clean the heat exchanger
	The ventilation grills in front of the machine might be closed.	Open the doors/windows to prevent the room temperature from rising too much.
	There might be a layer of lime-scale on the humidity sensor.	Clean the humidity sensor.
	The dryer might be overloaded with laundry.	Do not overload the dryer.
	The laundry might be insufficiently spun.	Select a higher spin speed on your washing machine.
Laundry comes out damp at the end of the drying process.	The laundry that comes out hot at the end of the drying process generally feels more humid.	
	The programme used might not be suitable for the type of laundry.	Check the care labels on the laundry items, select a suitable programme for the type of laundry and additionally, use the time programmes.
	The surface of the lint filter might be clogged.	Wash the filter with lukewarm water.
	The heat exchanger might be clogged.	Clean the heat exchanger
	The dryer might be overloaded with laundry.	Do not overload the dryer.
	The laundry might be insufficiently spun.	Select a higher spin speed on your washing machine.
The dryer cannot be opened or the programme cannot be started. The dryer does not get activated when adjusted.	The dryer might not be plugged in.	Make sure that the plug is fitted in the socket.
	The loading door might be open.	Make sure that the loading door is properly closed.
	You might not have set a programme or pressed the Start/ Pause key.	Make sure that the programme has been set and the dryer is not in the Standby (Pause) mode.
	Child lock might be active.	Deactivate the child lock.

The programme has been interrupted for no reason.	The loading door might not be closed properly.	Make sure that the loading door is properly closed.
	There might have been a power failure.	Press the Start/Pause key to start the programme.
	The water tank might be full.	Empty the water tank.
Clothes have shrunk, felted or deteriorated.	The programme used might not be suitable for the type of laundry.	Check the care labels on the laundry items, select a suitable programme for the type of laundry.
Water leaking from the loading door.	There might be lint accumulated on the inner surfaces of the loading door and on the surfaces of the gasket of the loading door.	Clean the inner surfaces of the loading door and the surfaces of the gasket of the loading door.
The loading door opens on its own.	The loading door might not be closed properly.	Push the loading door until you hear the closing sound.
The water tank warning symbol is on/flashing.	The water tank might be full.	Empty the water tank.
	The water discharge hose might be bent.	If the product is connected directly to the water outlet, check the water discharge hose.
The heat exchanger cleaning warning symbol is on.	The heat exchanger might be unclean.	Clean the heat exchanger.
The filter cleaning warning symbol is on.	The lint filter might be unclean.	Clean the filter.
	The filter seat might be clogged by lint.	Clean the filter seat.
	There might be a layer that causes obstruction on the surface of the lint filter.	Wash the filter with lukewarm water.
The filter and heat exchanger cleaning warning symbol are flashing.	The filter seat might be clogged by lint.	Clean the filter seat.
	There might be a layer that causes obstruction on the surface of the lint filter.	Wash the filter with lukewarm water.
	The heat exchanger might be clogged.	Clean the heat exchanger.
The program can not be started and the filter warning led is blinking.	The filter may not be placed.	Replace the filter.
	The filter warning led is blinking even though the filter is placed.	Call technical service.

SPECIFICATION

Type	WTP 477 031
Rated voltage	220-240V / ~50Hz
Rated power	1000 W
Refrigerant	R290
Ambient temperature*	+ 18°C ~+ 30°C
Maximum Load	max. 7 kg
Dimensions Depth/Height/Breadth	845/596/609 [mm]
Weight	43.8 kg
Meets the requirements of EU legislation, EN-61121 standard	EN-61121
Contains fluorinated greenhouse gases covered by the Kyoto Protocol Hermetically sealed	

Note:

1. Rated load is a maximum load. Always make sure that the weight of laundry in the dryer never exceeds the rated load.
2. Do not install the tumble dryer in a room where there is a risk of freezing temperature. The dryer may not work properly at temperature close to freezing.
3. Risk of damage if the condensed water freezes in the pump, hose or condensed water container.

Testing for label information in accordance with EN 61121 using the standard cotton drying programmes:

- at full load
- at partial load

● weighted average electricity consumption is **211 kWh/year**

The dryer incorporates heat pump containing fluorinated greenhouse gases covered by the Kyoto Protocol.

The gas is contained in a sealed system. If the system is damaged, it must not be repaired, but replaced with a new one.

Note!

Gas used in this appliance is very harmful to the ozone layer. Releasing it into the atmosphere will significantly contribute to global warming.

Refrigerant specification:

Gas type: R-290

Chemical formula: $\text{CF}_3\text{-CH}_2\text{F}$

Refrigerant quantity: 0.110kg / GWP 1430 / 214.50 kg eq CO_2

* The optimum appliance ambient operating temperature should be between 18°C and 30°C.

If the appliance operates at a lower or higher temperature, drying time may be extended, or the appliance may not reach the target temperature.



AMICA S.A.

UL. MICKIEWICZA 52
64-510 WRONKI

TEL. 67 25 46 100

FAX 67 25 40 320

WWW.AMICA.PL