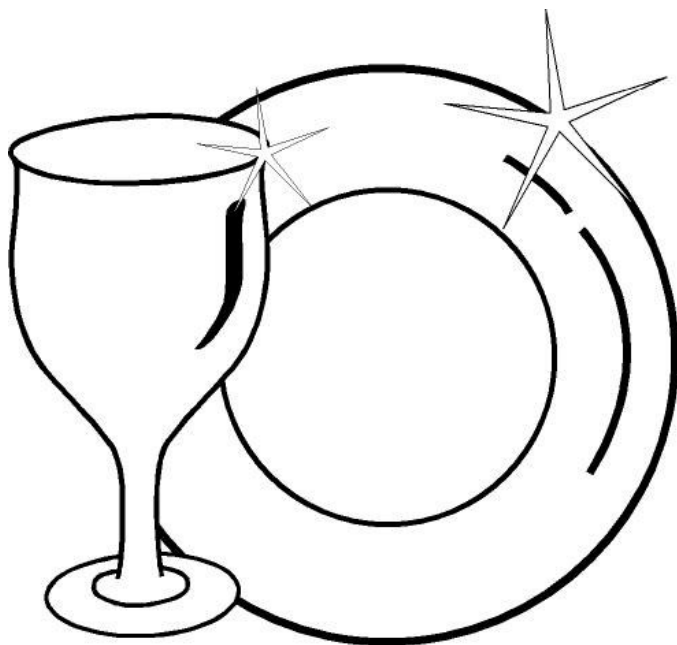


*Dishwasher*  
*Instruction Manual*

**OM 60-57 RT**

**OM 60-57 RT X**



**GRAM**

## CONTENTS

• Technical specifications .....	4
• Conformity with the standards and Test data .....	4
<b><i>Safety information and Recommendations.....</i></b>	<b>5</b>
• Recycling .....	5
• Safety information .....	5
• Recommendations .....	8
• Items not suitable for dishwashing .....	9
<b><i>Installing the machine .....</i></b>	<b>9</b>
• Positioning the machine .....	9
• Water connections .....	10
• Water inlet hose .....	11
• Water outlet hose .....	12
• Electrical connection.....	13
• Fitting the machine undercounter .....	14
• Prior to using the machine .....	17
<b><i>Preparing the machine for use .....</i></b>	<b>17</b>
• The importance of water decalcification .....	17
• Filling with salt .....	17
• Testing strip.....	18
• Adjusting salt consumption.....	18
• Detergent usage .....	20
• Filling the detergent compartment.....	20
• Combined detergent.....	20
• Filling with rinse aid and making the setting.....	21

<b>Loading your dishwasher .....</b>	<b>22</b>
• Top basket.....	22
• Lower basket.....	23
• Alternative basket loads .....	26
<b>Programme descriptions .....</b>	<b>28</b>
• Programme items .....	28
<b>Selection of Program and Starting of the Machine.....</b>	<b>29</b>
• Selection of Program and Starting of the Machine .....	32
• Programme follow-up .....	33
• Adding Additional Functions to the Program .....	34
• Changing a programme /Changing a programme with resetting .....	35
• Settings Menu .....	38
<b>Maintenance and Cleaning .....</b>	<b>40</b>
• Filters .....	40
• Spray arms .....	41
• Hose filter .....	41
<b>Failure codes and what to do in case of failure .....</b>	<b>42</b>
<b>Practical and useful information.....</b>	<b>44</b>



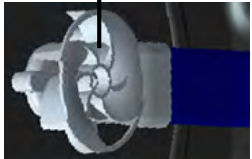
- % Upper basket with racks
- & Upper spray arm
- . Lower basket
- ( Lower spray arm
- ) Filters

- \* .
- + .
- , .
- .
- 1\$
- 1%

- Rating plate
- Control Panel
- Detergent and rinse-aid dispenser
- Salt dispenser
- Upper basket track latch
- Upper Cutlery Basket



**Turbo Drying Unit:** This system provides better drying performance for your dishes.



**Ceiling Spray Arm:** It provides better washing for the dishes at upper basket.



## Technical specifications

Capacity	15 plate settings
Height	820 mm- 870 mm/870mm- 920mm
Width	598 mm
Depth	570 mm
Net Weight	50 kg
Electricity input	220-240 V, 50 Hz
Total Power	2200 W
Heating Power	2000 W
Pump Power	100 W
Drain Pump Power	30 W
Water supply pressure	0.03 MPa (0,3 bar)-1 MPa (10 bar)
Current	10 A

Producer company has its right to amend design and technical specifications reserved.

### Conformity with the standards and Test data / EC Declaration of Conformity

All stages related to the machine are executed in accordance with the safety rules provided in all relevant directives of the European Community. 2004/108/EC, 2006/95/EC, IEC 436/DIN 44990, EN 50242

**Important Note for User:**For softcopy of this user manual, please contact following address:

**"dishwasher@standardtest.info"**.In your e-mail, please provide the model name and serial number (20 digits) which you can find on the appliance door.

# **SAFETY INFORMATION AND RECOMMENDATIONS**

## **Recycling**

- Certain components and the packaging of your machine have been produced from recyclable materials.
- Plastic parts are marked with international abbreviations: (>PE< , >PS< , >POM< , >PP< , )
- Cardboard parts have been produced from recycled paper and they should be disposed of into waste paper collection containers for recycling.
- Such materials are not suitable for being disposed of into garbage bins. They should be delivered to recycling centres instead.
- Contact relevant centres in order to obtain information on methods and points of disposal.

## **Safety Information**

### ***When you take delivery of your machine***

- Check for any damage to your machine or to its packaging. Never start a machine damaged in any way, make sure to contact GRAM service.
- Unwrap the packaging materials as indicated and dispose of them in accordance with the rules.

### ***The points to pay attention during machine installation***

- Choose a suitable, safe and level place to install your machine.
- Carry out the installation and connection of your machine by following the instructions.
- This machine should be installed and repaired by an authorised service only.
- Only original spare parts should be used with the machine.
- Before installing, be sure that the machine is unplugged.

- Check whether the indoor electrical fuse system is connected according to the regulations.
- All electrical connections must match the values indicated on the rating plate.
- Pay special attention and be sure that the machine does not stand on the electricity supply cable.
- Never use an extension cord or a multiple socket for making a connection. The plug should be comfortably accessible after the machine has been installed.
- After installing the machine to a suitable place, run it unloaded for the first time.

### **In daily use**

- This machine is for household use; do not use it for any other purpose. Commercial usage of the dishwasher will void the guarantee.
- Do not get up, sit or place a load on the open door of the dishwasher, it may fall over.
- Never put into the detergent and rinse aid dispensers of your machine anything other than those detergents and rinse aids which are produced specifically for dishwashers. Our company will not be responsible for any damage that might occur in your machine otherwise.
- The water in the machine's washing section is no drinking water do not drink it.
- Due to danger of explosion, do not put into the machine's washing section any chemical dissolving agents such as solvents.
- Check whether plastic items are heat-resistant before washing them in the machine.
- This appliance can be used by children aged from 8 years and above and persons with reduced physical, sensory or

mental capabilities or lack of experience and knowledge if they have been given supervision or instruction concerning use of the appliance in a safe way and understand the hazards involved. Children shall not play with the appliance. Cleaning and user maintenance shall not be made by children without supervision.

- Do not put into your machine those items which are not suitable for dishwashing. Also, do not fill any basket above its capacity. Our company will not be responsible for any scratch or rust to form on the inner frame of your machine due to basket movements otherwise.

- Especially because hot water may flow out, the machine door should not be opened under any circumstances while the machine is in operation. In any case, a safety device ensures that the machine stops if the door is opened.

- Do not leave your dishwasher's door open. Failure to do so may lead to accidents.

- Place knives and other sharp-ended objects in the cutlery basket in blade-down position.

- If the supply cord is damaged, it must be replaced by the manufacturer, its service agent or similarly qualified persons in order to avoid a hazard.

- This appliance is not intended for use by persons (including children) with reduced physical, sensory or mental capabilities, or lack of experience and knowledge, unless they have been given supervision or instruction concerning use of the appliance by a person responsible for their safety.

- If EnergySave option is selected as "Yes", The door will be opened at the end of the program. Do not force to close the door to avoid harm auto door mechanism during 1 minutes. The door must be open during 30 minutes to get effective drying. ( in models with auto door opening system )

**Warning:** Do not stand in front of the door after the signal sounds belonging auto-open.

## **For your children's safety**

- After removing the machine's packaging, make sure that the packaging material is out of reach of children.
- Do not allow children to play with or start the machine.
- Keep your children away from detergents and rinse aids.
- Keep children away from the machine while it is open because there may still be residues of cleaning substances inside the machine.
- Be sure that your old machine does not pose any threat to your children. Children are known to have gotten themselves locked in old machines. To forestall such a situation, break your machine's door lock and tear off the electrical cables.

## **In case of malfunctioning**

- Any malfunction in the machine should be repaired definitely by qualified persons. Any repair work performed by anyone other than the authorised service personnel will cause your machine to be left outside the scope of warranty.
- Prior to any repair work on the machine, be sure that the machine is cut off from the mains. Switch off the fuse or unplug the machine. Do not pull by the cable when unplugging. Make sure to turn off the water tap.

## **Recommendations**

- For energy and water saving, remove coarse residues on your dishes before placing the dishes into the machine. Start your machine after having fully loaded it.
- Use the pre-wash programme only whenever necessary.
- Place such hollow items as bowls, glasses and pots into the machine in such a way that they will face down.
- You are recommended not to load into your machine any dishes different or more than indicated.

## **Items not suitable for dishwashing:**

- Cigarette ashes, candle leftovers, polish, paint, chemical substances, iron-alloy materials;
- Forks, spoons and knives with wooden or bone, or ivory or nacre-coated handles; glued items, items soiled with abrasive, acidic or base chemicals.
- Plastic items that are not heat-resistant, copper or tin-coated containers.
- Aluminium and silver objects (they may discolour, become dull).
- Certain delicate glass types, porcelains with ornamental printed patterns as they fade even after the first wash; certain crystal items as they lose their transparency over time, adhered cutlery that is not heat-resistant, lead crystal glasses, cutting boards, items manufactured with synthetic fibre;
- Absorbent items as sponges or kitchen rags are not suitable for dishwashing.

**Warning:** Take care to buy dishwasher-proof sets in your future purchases.

## **INSTALLING THE MACHINE**

### **Positioning the machine**

When determining the place to put your machine on, take care to choose a place where you can easily load and unload your dishes.

Do not put your machine in any location where there is the probability for the room temperature to fall below 0°C.

Before positioning, take the machine out of its packaging by following the warnings located on the package.

Position the machine close to a water tap or drain. You need to site your machine, taking into consideration that its connections will not be altered once they are made.

Do not grip the machine by its door or panel in order to move it.

Take care to leave a certain clearance from all sides of the machine so that you can comfortably move it back and forth during cleaning.

Make sure that the water inlet and outlet hoses do not get squeezed while positioning the machine. Also, make sure that the machine does not stand on the electrical cable.

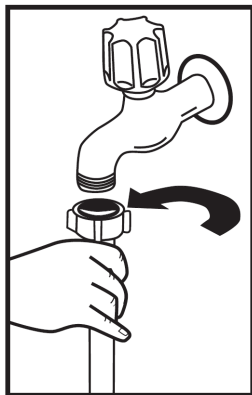
Adjust the machine's adjustable feet so that it can stand level and balanced. Proper positioning of the machine ensures problem-free opening and closing of its door.

If the door of your machine does not close properly, check if the machine is stable on the floor it stands; if not, adjust the adjustable feet and ensure its stable position.

## **Water connection**

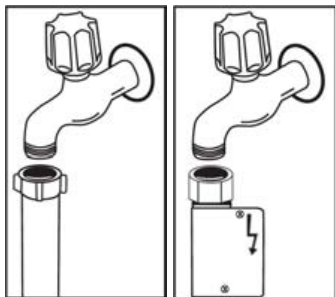
Be sure that the indoor plumbing is suitable for installing a dishwasher. Also, we recommend that you fit a filter at the entrance of your place or apartment so as to avoid any damage to your machine because of any contamination (sand, clay, rust etc.) that might be occasionally carried in through the mains water supply or the indoor plumbing, and to forestall such complaints as yellowing and formation of deposits after washing.

## Water inlet hose



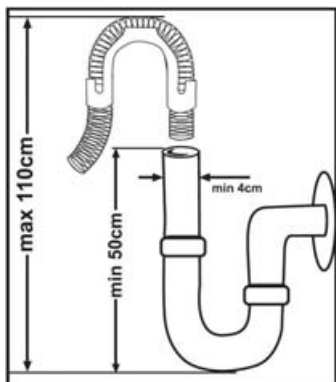
Do not use the water inlet hose of your old machine, if any. Use the new water inlet hose supplied with your machine instead. If you are going to connect a new or long - unused water inlet hose to your machine, run water through it for a while before making the connection. Connect the water inlet hose directly to the water inlet tap. The pressure supplied by the tap should be at a minimum of 0.03 Mpa and at a maximum of 1 Mpa. If the water pressure is above 1 Mpa, a pressure-relief valve should be fitted in between.

After the connections are made, the tap should be turned on fully and checked for water tightness. For the safety of your machine, make sure to always turn off the water inlet tap after each wash programme is finished.



**NOTE:** Aquastop water spout is used in some models. In case of using Aquastop, a dangerous tension exists. Do not cut Aquastop water spout. Do not let it get folded or twisted.

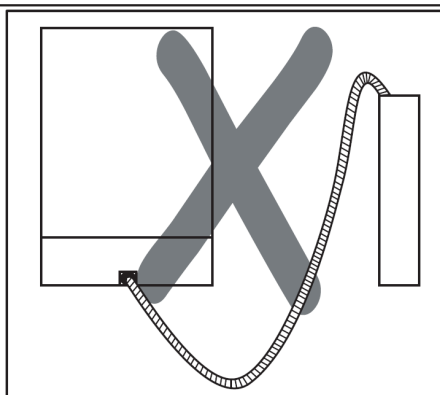
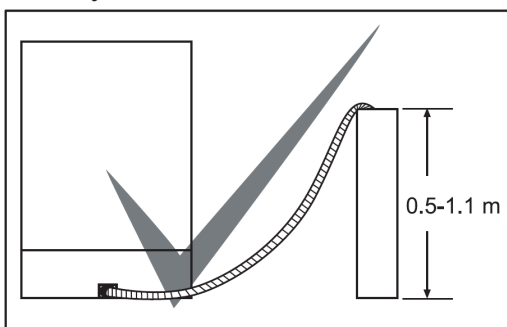




## Water outlet hose

The water drain hose can be connected either directly to the water drain hole or to the sink outlet spigot. Using a special bent pipe (if available), the water can be drained directly into the sink via hooking the bent pipe over the edge of the sink. This connection should be at a minimum of 50 cm and at a maximum of 110 cm from the floor plane.

**Warning:** When a drain hose longer than 4 m is used, the dishes might remain dirty. In that case, our company will not accept responsibility.



## **Electrical connection**

The earthed plug of your machine should be connected to an earthed outlet supplied by suitable voltage and current. If there is no earthing installation, have a competent electrician carry out an earthing installation. In case of usage without earthing installed, our company will not be responsible for any loss of usage that might occur.

The indoor fuse current value should be 10-16 A.

Your machine is set according to 220-240 V. If the mains voltage in your location is 110 V, connect a transformer of 110/220 V and 3000 W inbetween. The machine should not be plugged in during positioning.

Always use the coated plug supplied with your machine.

Running in low voltage will cause a decline in washing quality.

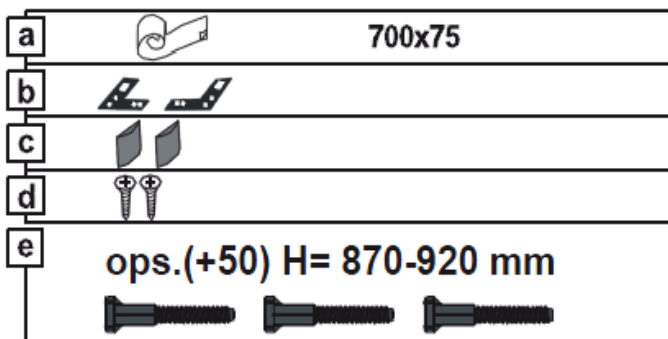
The machine's electrical cable should be replaced by an authorised service or an authorised electrician only. Failure to do so may lead to accidents.

For safety purposes, always make sure to disconnect the plug when a wash programme is finished.

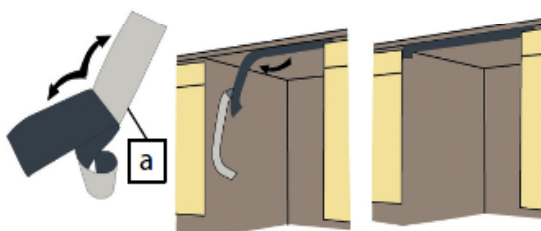
In order not to cause an electric shock, do not unplug when your hands are wet.

When disconnecting your machine from the mains supply, always pull from the plug. Never pull the cord itself.

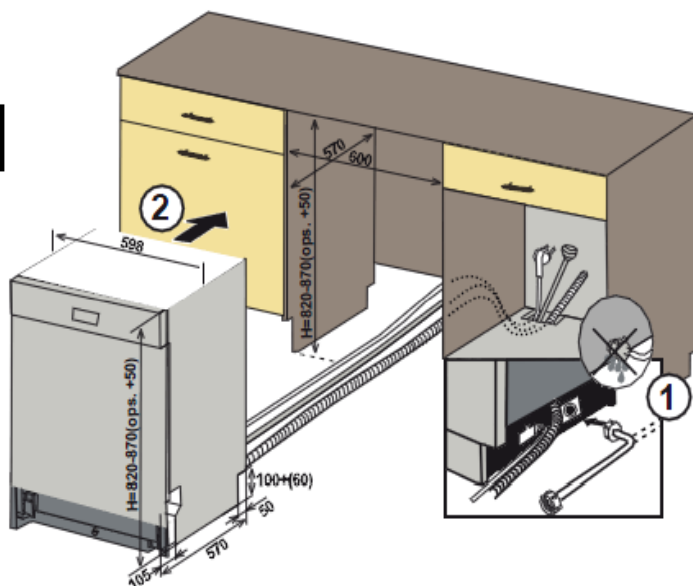
## Fitting the machine undercounter



1

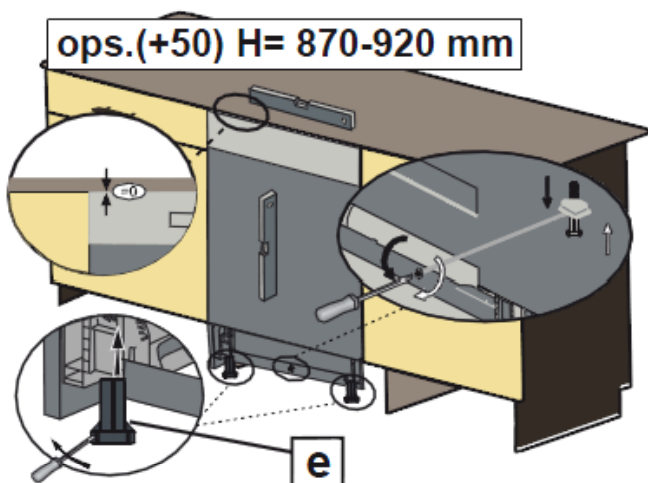


2



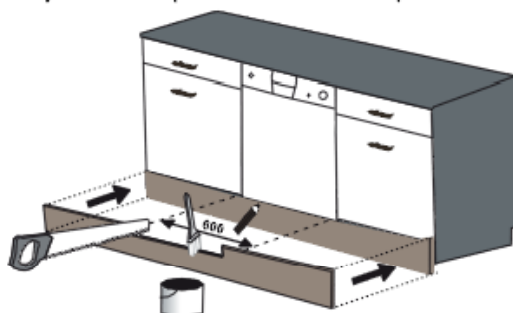
**4-b** Follow the list of instructions is given with the kit. (Optional) (52075772 )

**ops.(+50) H= 870-920 mm**



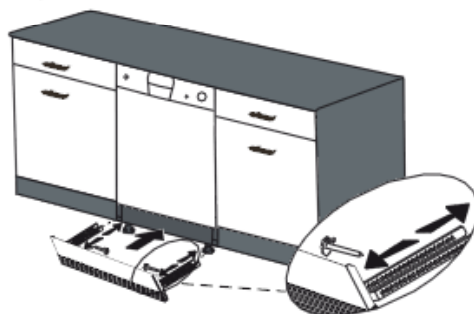
**5**

**Option 1 :**To put the furniture kickplate.

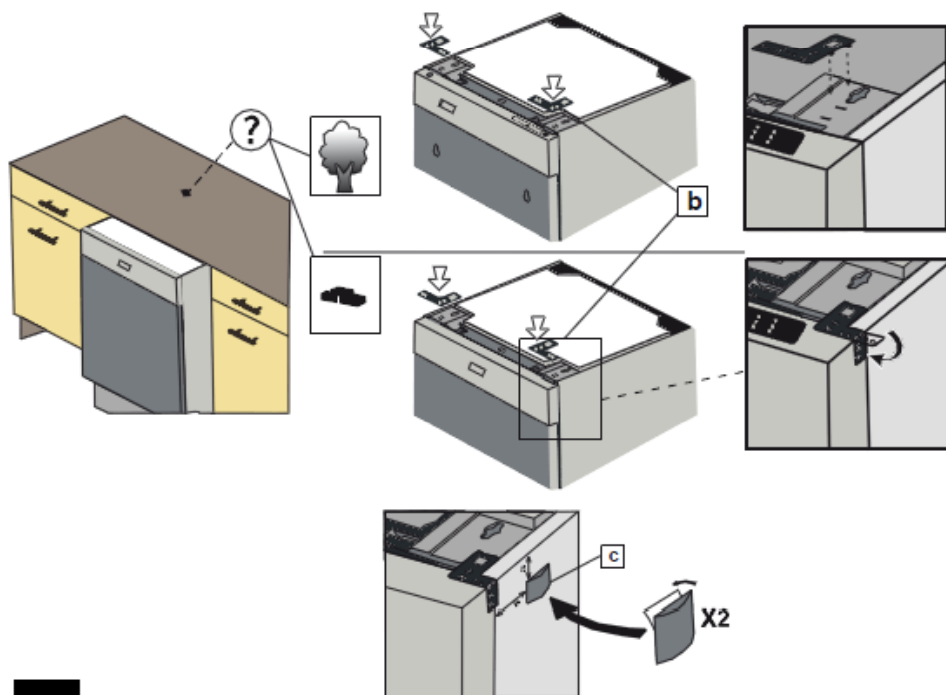


**6**

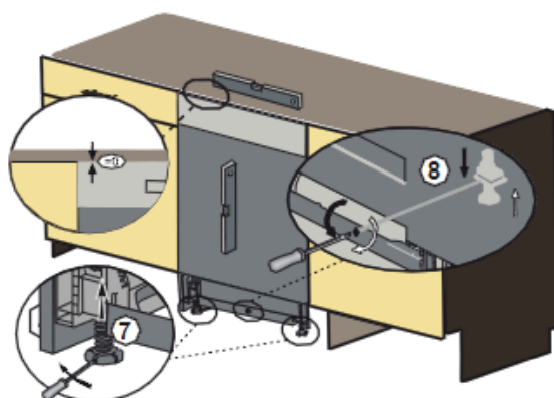
**Option 2 :**To put the adjustable plint group.  
Follow the instructions is given with adjustable plint group.



**3**



**4-a**



### **Prior to using the machine for the first time**

- Check whether the electricity and supply water specifications match the values indicated by the installation instructions for the machine.
- Remove all packaging materials inside the machine.
- Set the water softener.
- Add 2 kg salt into the salt compartment and fill with water up to a level at which it will almost overflow.
- Fill the rinse aid compartment.

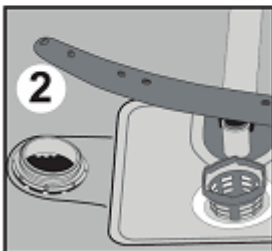
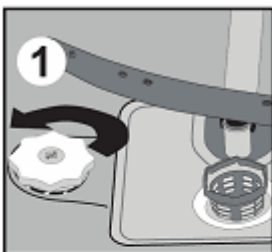
## **PREPARING THE MACHINE FOR USE**

### **The importance of water decalcification**

For a good washing function, the dishwasher needs soft, i.e. less calcareous water. Otherwise, white lime residues will remain on the dishes and the interior equipment. This will negatively affect your machine's washing, drying and shining performance. When water flows through the softener system, the ions forming the hardness are removed from the water and the water reaches the softness required to obtain the best washing result. Depending on the level of hardness of the inflowing water, these ions that harden the water accumulate rapidly inside the softener system. Therefore, the softener system has to be refreshed so that it operates with the same performance also during the next wash. For this purpose, dishwasher salt is used.

### **Filling with salt**

Use softener salt specifically produced for use in dishwashers. To put softener salt, first remove the



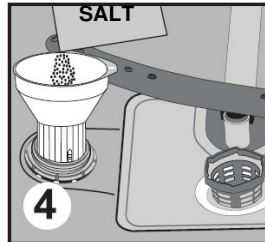
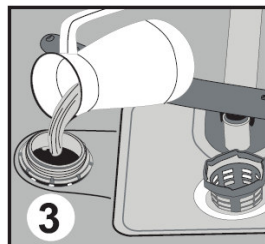
lower basket and then open the salt compartment cap by turning it counter clockwise. **1** **2** At first fill the compartment with 2kg salt and water **3** at overflowing level. If available, using the funnel **4** provided will make filling easier. refit the cap and close it. If the salt warning lamp on the control panel becomes on fill the salt compartment with salt again.

#### **Fill the salt compartment with water at first use only.**

If you put a tablet into the salt compartment, do not fill the compartment completely. We recommend that you use small-grained or powder softener salt. Do not put table salt into your machine. Otherwise, the function of the softener compartment may

decrease over time. When you start your dishwasher, the salt compartment gets filled with water. Therefore, put the softener salt prior to starting your machine.

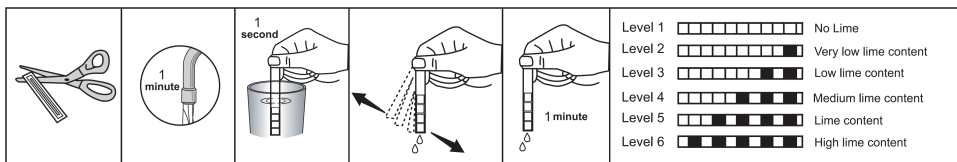
This way, overflowing salt gets immediately cleaned up through the wash operation. If you are not going to wash any dishes immediately after putting salt, then run a short washing program with an empty machine in order to avoid any damage ( to prevent corrosion ) to your machine due to the salt overflow while filling in the salt container.



### Testing strip

The washing effectiveness of your machine depends on the softness of the tap water. For this reason, your machine is equipped with a system that reduces the hardness in mains water supply. The washing effectiveness will increase when the system is correctly set. To find out the water hardness level of water in your area, contact your local water board or determine water hardness level by using the test strip(if available).

Open the testing strip.	Run water through your tap for 1 min.	Keep the testing strip in water for 1 sec.	Shake the testing strip after taking it out of water.	Wait for 1 min.	Make your machine's water hardness setting according to the result obtained through the testing strip.
-------------------------	---------------------------------------	--	---	-----------------	--



### Adjusting salt consumption

#### Table of Water Hardness Level Settings

Water hardness level	German hardness dH	French hardness dF	British hardness dE	Hardness Level Indicator
1	0-5	0-9	0-6	L1 is seen on display.
2	6-11	10-20	7-14	L2 is seen on display.
3	12-17	21-30	15-21	L3 is seen on display.
4	18-22	31-40	22-28	L4 is seen on display.
5	23-31	41-55	29-39	L5 is seen on display.
6	32-50	56-90	40-63	L6 is seen on display.

If the hardness of the water you use is above 90 dF (French hardness) or if you are using well water; you are recommended to use filter and water refinement devices.

**NOTE:** Hardness level is adjusted to level 3 as a factory setting.

Adjust water hardness setting of your machine according to the level specified on the test track.

Enter the menu to change water hardness. In order to enter the menu settings, hold the option and delay buttons for 3 seconds. The display will show an expression (“Keep Pressing .. X”) to let you know how many more seconds you have to hold the button. When this number is zero, you will see the “Settings Menu” on the display.

After entering the menu, select “2. Water Hardness: X” by using up/down selection buttons. The number “X ” will be similar to the following values : L01,L02,L03,L04,L05,L06.



**2. Water Hardness: X**

Then, press the confirmation button (3), the “X” value will start flashing. Select the desired value by using up/down selection buttons.

Press the confirmation button ( 3 ) to save the settings; the expression “Stored” will appear on the display.



**Stored**

Your settings will be saved and the display automatically returns to the water hardness setting menu.

In order to exit the menu, you may hold the option and delay buttons for 3 seconds like you did when entering the menu or you may select the seventh row ( 7. Exit Menu ) in the menu with the confirmation button.



### ***Detergent usage***

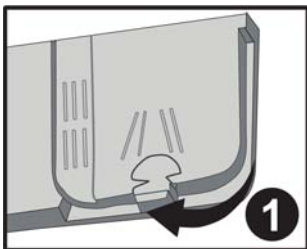
Use a detergent specifically designed for use in domestic dishwashers.

You can find powder, gel, and tablet detergents in the market that have been designed for household dishwashers.

Detergent should be put into the compartment prior to starting the machine. Keep your detergents in cool, dry places out of reach of your children.

Do not fill detergent into the detergent compartment more than required; otherwise it may cause scratches on your glasses as well as lead to a poorly dissolved detergent.

Should you need more information concerning the detergent you will use, contact detergent manufacturers directly.



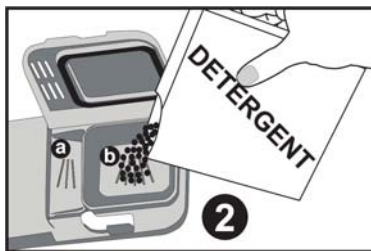
### ***Filling the detergent compartment***

Push the latch to open the detergent container as shown in the image. **1** Detergent pod has level lines inside. It is possible to measure the right detergent amount using these lines. Detergent pod can take totally 40 cm<sup>3</sup> detergent.

Open the dishwasher detergent and pour into

the larger compartment **b** 25 cm<sup>3</sup> if your dishes are heavily soiled or 15 cm<sup>3</sup> if they are less soiled. **2** If your dishes have been kept dirty for a very long time, if there are dried food wastes on them, and if you have overly loaded the dishwasher, pour **a** 5 cm<sup>3</sup> detergent into the pre-wash compartment and start your machine.

You may have to add more detergent into your machine, depending on the degree of soil and on the water hardness level in your area.



### ***Combined detergent***

Detergent manufacturers also produce combined detergents called "2 in 1", "3 in 1" or "5 in 1" etc.

"2 in 1" detergents contain detergent + salt or rinse aid. When using "2 in 1" detergents make sure to check the specifications of the tablet.

Other tablet detergents contain detergent + rinse aid + salt + various extra functions.

Generally, combined detergents produce sufficient results under certain usage conditions only. Such detergents contain rinse aid and/or salt in preset amounts

### ***Points to consider when using this type of products:***

- Always make sure to check the specifications of the product you will use or whether or not it is a combined product.
- Check if the detergent used is appropriate for the hardness of mains water that machine is pertaining to.
- Observe the instructions on packagings when using such products.
- If such detergents are in the form of tablets, never put them into the interior section or the cutlery basket of the dishwasher. Always put the tablets into the detergent compartment in the detergent dispenser.

- They produce good results for certain types of usage only. If you are using this type of detergents, you need to contact the manufacturers and find out about the suitable conditions of use.
- When the conditions of use of such products and the machine settings are appropriate, they ensure savings in salt and/or rinse aid consumption.
- Contact the detergent manufacturers if you are not obtaining good wash results (if your dishes stay calcareous and wet) after having used 2 in 1 or 3 in 1 detergents. The scope of warranty for your machine does not cover any complaints caused by the use of these types of detergents.

**Recommended usage:** If you want to obtain better results while using combined detergents, add salt and rinse aid into your machine and adjust the water hardness setting and the rinse aid setting to the lowest position.

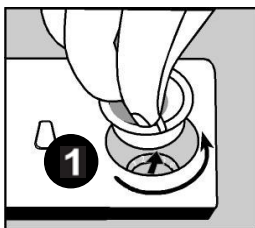
**!** Solubility of the tablet detergents produced by different companies can vary depending on the temperature and time. Therefore, it is not recommended to use such detergents in short programs. It is more suitable to use powder detergents in such programs.

**Warning:** Should any problem, which you have not encountered before, arise with the use of this type of detergents, contact the detergent manufacturers directly.

#### **When you give up using combined detergents**

- Fill the salt and rinse aid compartments.
- Adjust the water hardness setting to the highest position ( 6 ) and run an empty-wash.
- Adjust the water hardness level.
- Make the suitable rinse aid setting.

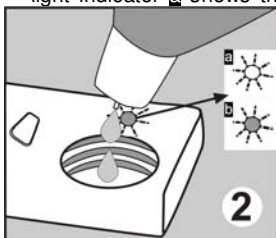
#### **Filling with rinse aid and making the setting**



Rinse aid is used to prevent the stay of white water drops, lime stains, white film strip-shaped stains that may form on the dishes, as well as to increase the drying performance. Contrary to the popular beliefs, it is used not only for obtaining shinier dishes but also for obtaining sufficiently dried dishes. For this reason, care should be taken that there is adequate amount of rinse aid in the rinse aid compartment and only polishing material produced for use at dishwashers should be used.

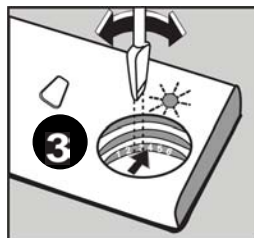
If the rinse aid lamp on the control panel becomes on fill the rinse aid compartment with rinse.

To put rinse aid, remove the rinse aid compartment cap by turning it. **1** Fill the rinse aid compartment with rinse aid until the rinse aid level indicator becomes dark. **2** refit the cap and close it by turning it in a way that the nails will correspond to one another. By checking the rinse aid level indicator on the detergent dispenser, you can understand whether or not your machine needs rinse aid. A dark indicator **b** means that there is rinse aid in the compartment, while a light indicator **a** shows that you need to fill the compartment with



rinse aid.

The rinse aid level adjuster can be set to a position between 1 and 6. Factory setting for rinse aid is the position **3**. You need to increase the degree of the adjuster if water stains form on your dishes after a wash, whereas you need to decrease the degree if a blue stain is left when wiped by hand. **3**



**Warning:** Use only those rinse aid materials which are allowed for use in the machine. As rinse aid residues left as a result of overflowing will create extremely high amounts of foam and thus reduce the washing performance, remove the excess amount of rinse aid by wiping it with a rag.

## LOADING YOUR DISHWASHER

If you properly place your dishes into the machine, you will be using it in the best way in terms of energy consumption, washing and drying performance.

There are two separate baskets for you to load your dishes into your machine. You can load into the lower basket such round and deep items as pots with long handles, pot lids, plates, salad plates, cutlery sets.

The upper basket has been designed for tea plates, dessert plates, salad bowls, cups and glasses. When placing long-stem glasses and goblets, lean them against the basket edge, rack or glass supporter wire and not against other items. Do not lean long glasses against one another or they cannot remain steady and may receive damage.

It is more appropriate to locate the thin narrow parts into the middle sections of baskets.

You can place spoons among the other cutlery sets in order to prevent them from sticking to one another. You are recommended to use the cutlery grid in order to obtain the best result.

To avoid any possible injuries, always place such long-handle and sharp-pointed dishes as serving fork, bread knife etc. with their sharp points facing down or horizontally on the baskets.

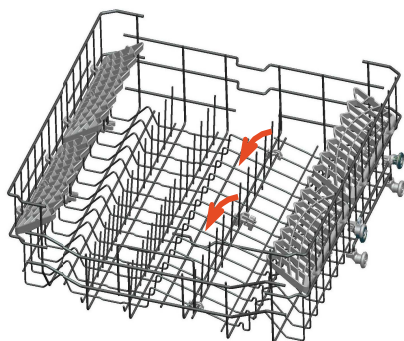
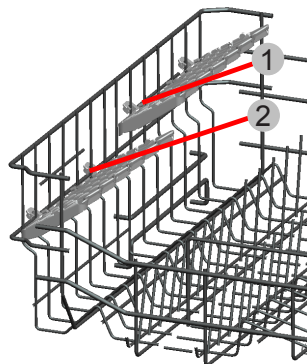
**Warning:** Place your dishes into your machine in a way that they will not prevent the upper and lower spray arms from spinning.

### Top basket

#### Height Adjustable Rack

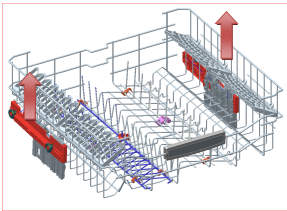
These racks are designed to increase the capacity of the top basket. You can place your glasses and cups on the racks. You can adjust the height of these racks. Thanks to this feature, you can place different sizes of glasses under these racks.

Thanks to height adjustment plastics mounted on the basket, you can use your racks in 2 different heights. In addition, you can place long forks, knives and spoons on these racks laterally, so that they do not block the revolution of propeller.



Foldable racks on the upper basket are designed in order to let you place big items easier such as pots, pans, etc. If requested, each part can be folded separately, or all of them can be folded and larger spaces can be obtained. You can use foldable racks by raising them upwards, or by folding down.

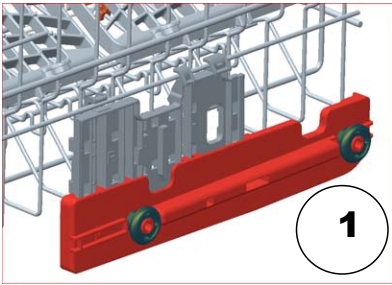
### **Top basket height adjustment while it is full**



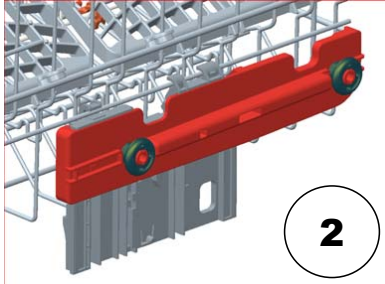
Basket height adjustment mechanism on the top basket of your machine is designed to let you adjust the height of your top basket upwards or downwards, without removing it from your machine when it is full, and create large spaces at the top or bottom area of your machine as needed. Basket of your machine is set to upper position in factory settings.

In order to raise your basket, hold it from both sides and pull it upwards. In order to lower it, hold it from both sides again, and leave it.

In loaded basket adjustment mechanism, make sure that both sides are in the same position (up or down).



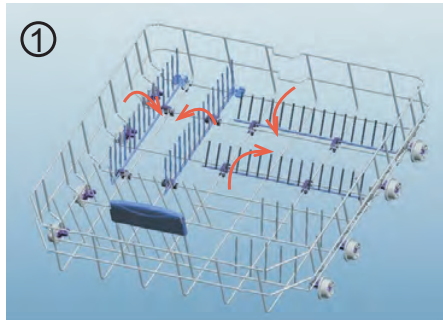
1



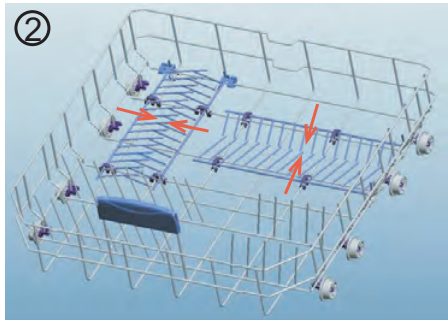
2

### **Lower Basket Folding Racks**

Folding racks consisting of four parts that are located on the lower basket of your machine are designed in order to let you place big items easier such as pots, pans, etc. If requested, each part can be folded separately, or all of them can be folded and larger spaces can be obtained. You can use folding racks by raising them upwards, or by folding.



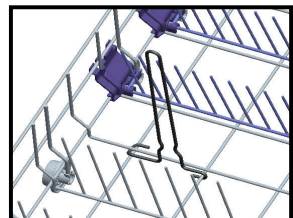
①



②

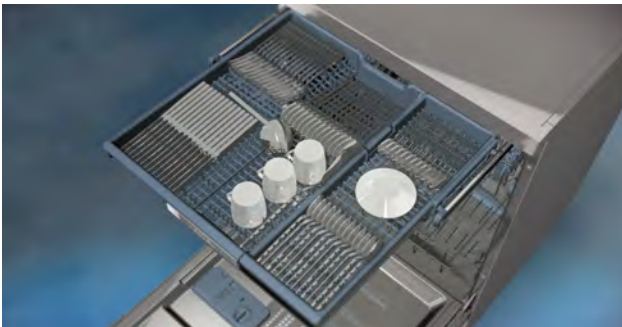
### **Bottle Rack**

Bottle rack is designed to let you wash items with large openings and higher items easier. You can pull out bottle rack in the direction of the arrow as shown on the picture when you do not use it.



### ***Upper Cutlery Basket***

The upper cutlery basket is designed for you to place forks, spoons and knives, long dippers and small items.



Because it can easily be taken out of the machine, it allows your dishes to be taken out of the machine along with the basket after washing.



The Upper Cutlery Basket is composed of two pieces; if you need to make space for the dishes in the upper basket, you can take out the left or right part of the upper cutlery basket in order to obtain more space.

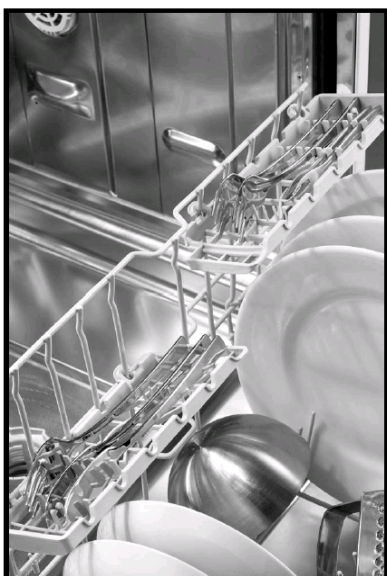
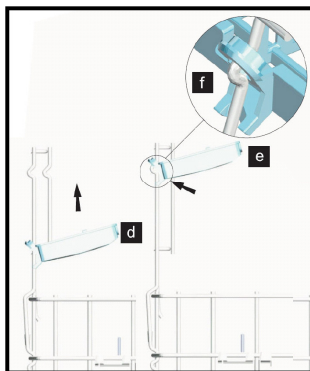
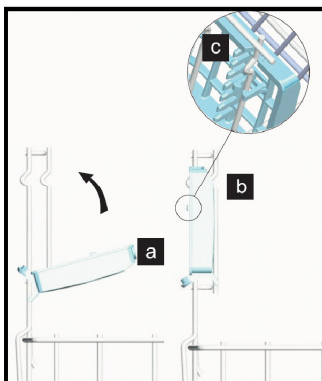
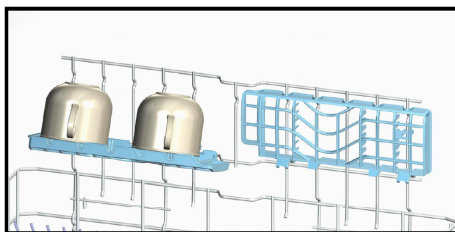
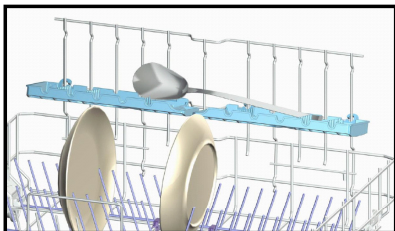


**Warning:** Knives and other sharp objects must be placed horizontally in the cutlery basket.



### Multi-functional Rack System

Multi-functional rack system is located in the bottom basket of your machine. You can easily wash spare glasses or dishes like long ladles, bread knife with the help of this accessory.

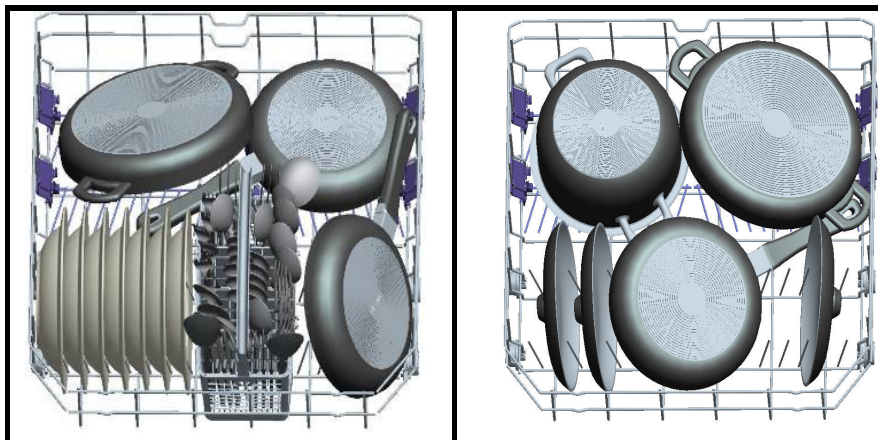


Please fold the racks by putting them from **a** position to **b** position, in order to put the racks in the multi-functional rack system into the closed position. Please make sure that claws on the rack are fit on the cord **c**. You can put the rack into the open position by following the steps in a reverse manner.

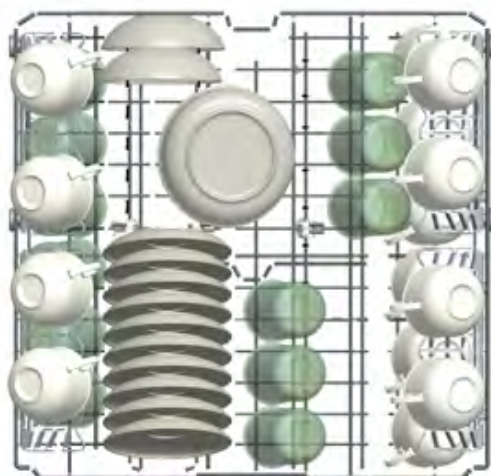
Your racks in the multi-purpose rack system has two positions: low position **d** and upper position **e**. This way you can attain larger space at the bottom part of your machine. Please put your racks into **e** position from **d** position to **e**, in order to put your racks to the upper position. Please fix the racks to their places **f** on the cord. Please make sure that the prop does not contact the dishes you put on the racks.

## ***Alternative basket loads***

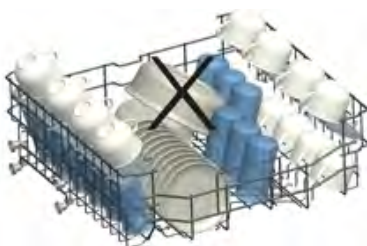
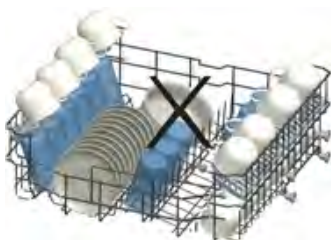
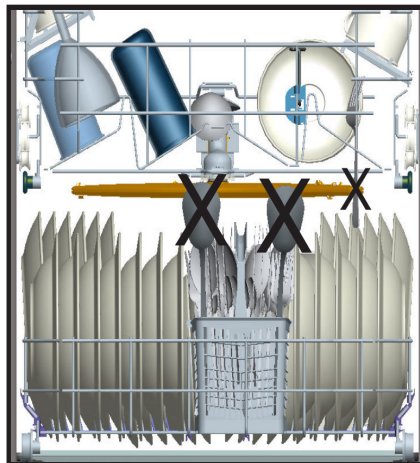
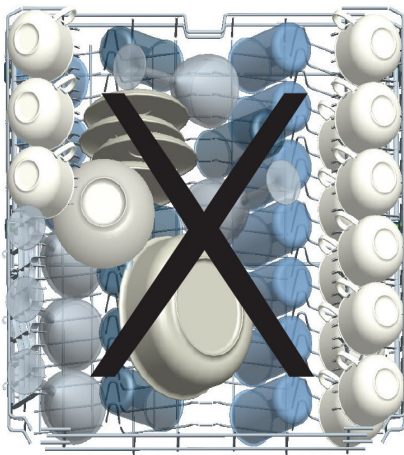
### ***Lower Basket***



### ***Top basket***



### ***Faulty loads***



### ***Important Note for Test Laboratories***

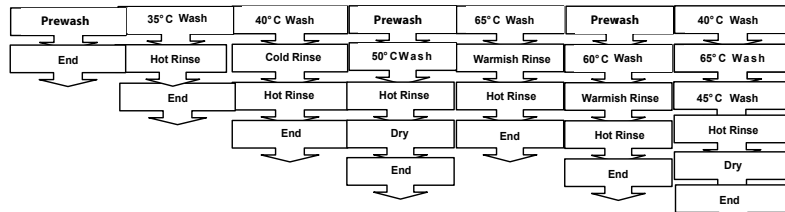
For detailed information on performance tests, please contact following address: "dishwasher@standardtest.info". In your email, please provide the model name and serial number (20 digits) which you can find on the appliance door.



## PROGRAM DESCRIPTIONS

### Program items

Program No				Reference						
Name of Program	Pre-washing	*Jet Wash 18'	Quick 30'	Eco 50°C	Super 50'	Daily	Dual Wash 65°C	Oto 30°C - 50°C	Oto 50°C - 60°C	Oto 60°C - 70°C
Washing Temperature	-	35°C	40°C	50°C	65°C	60°C	65°C	30-50°C	50-60°C	60-70°C
Type of Food Fragment	Fresh less dirty, coffee, milk, tea	Less dirty, coffee, milk tea, not kept for long	Fresh coffee, milk, tea, cold meat, vegetables	Fresh coffee, milk, tea, cold meat, vegetables	Married soup, sauce, pastry, egg, rice, potato and meals cooked inoven, fried food	Married soup, sauce, pastry, egg, rice, potato and meals cooked inoven, fried food	Soups, sauces, pasta, eggs, pilaf, potato and oven dishes, fried foods, kept for long	Automatically adjust the washing time with temperature and amount of water by determining the soil level of dishes		
Level of Contamination	small	small	small	a YXj a	medium	medium	high	high small	high	high
Amount of Detergent B: 25 cm <sup>3</sup> / 15 cm <sup>3</sup> / A: 5 cm <sup>3</sup>	-	**A	B	A+B	A+B	A+B	A+B	B	A+B	A+B



Washing steps are determined automatically according to the level of soil.

Program Period ( minutes )	15	18	30	176	50	95	106	79-87	102-117	107-171
Power Consumption (kW hour)	0,02	0,57	0,74	0,84	1,29	1,38	1,43	0,82	1,18	1,30
Water Consumption (liters)	4,2	7,7	10,9	9,0	10,7	14,9	15,4	10,6-17,7	10,9-18,5	12,3-24,6

In case option of ½ Half-load is used, the values in the program list will be as follows.

Program Period ( minutes )	15	18	30	133	46	83	88	62-75	82-97	123-151
Power Consumption (kW hour)	0,02	0,57	0,74	0,77	1,23	1,34	1,33	0,87	1,11	1,58
Water Consumption (liters)	4,2	7,7	10,9	9,0	10,7	11,1	11,1	9,9-13,7	10,5-14,3	11,9-19,9

**Dual Wash :** The delicate dishes on the upper basket are washed at a lower pressure and the heavily soiled dishes on the lower basket are washed at a higher pressure by the help of a variable-speed engine. Therefore, you can wash both delicate/less soiled dishes and heavily soiled dishes at the same time.

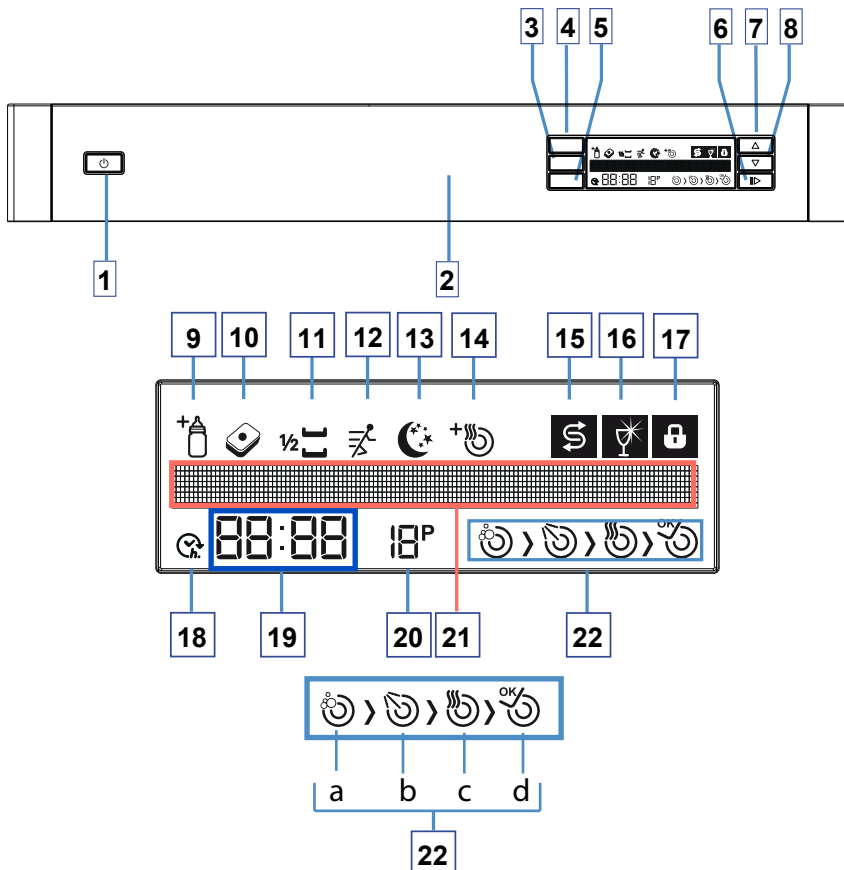
\*Off mode and left on mode tests in accordance with EN 62301 must be carried out with Ecomode brightness level.

Jetwash 18 min programme can be used for not kept for long, less dirty dishes. It is suitable for dishes of four persons.

Jetwash 18 min. Only powder detergent should be used.

**Warning:** In Jetwash 18 min, Fast 30 min and Super 50 min programmes, there is no drying step. Values above have been tested according to related standards in lab condition. These values may vary due to environment conditions (mains voltage, water pressure, water inlet temperature and ambient temperature).

## Selection of Program and Starting of the Machine



- |                                 |  |
|---------------------------------|--|
| 1-On/Off                        | 16-Rinse Aid Level Warning Indicator   |
| 2-Door Handle                   | 17-Child Lock Indicator                |
| 3-Confirmation Button           | 18-Delay Indicator                     |
| 4-Option Button                 | 19-Remaining Time/Delay Time Indicator |
| 5-Delay Button                  | 20-Program Number Indicator            |
| 6-Start/Pause button            | 21-Display Information Line            |
| 7-Up Selection Button           | 22-Washing cycle progress indicators   |
| 8-Down Selection Button         | a-Washing Cycle Symbol                 |
| 9-Extra Hygiene Indicator       | b-Rinse Cycle Symbol                   |
| 10-Tablet Indicator             | c-Drying Cycle Symbol                  |
| 11-Half Load Indicator          | d-End Cycle Symbol                     |
| 12-Extra Fast Indicator         |  |
| 13-Extra Silent Indicator       |  |
| 14-Extra Drying Indicator       |  |
| 15-Salt Level Warning Indicator |  |

## **BUTTONS**

### **Power On/Off Button**

**1**

When you press the on/off button, the machine is energized and the display shows the last used program; in the off position, the LEDs on the display are off.

### **Door Handle**

**2**

Please use the door handle to open-close the door of your machine.

### **Confirmation Button**

**3**

Confirms (saves) your additional functions and settings.

### **Option Button**

**4**

Allows you to use the functions in the additional functions menu.( 9-10-11-12-13-14 )

### **Delay Button**

**5**

Delays the starting time of the program you have selected (1-24 hours).

You may see the delay time in the Remaining Time/Delay Time Indicator (19).

When the delay button is pressed, Delay Indicator (18) is seen on the display.

### **Start/Pause Button**

**6**

When you press the Start/Standby Button, the selected program starts and washing symbol (a) appears on the display.

You may follow the washing phases on the display. ( 22-a-b-c-d )

### **Up / Down Buttons**

**7 8**

Allows you to browse in Program, Additional functions, delay and settings menus.

## **Additional Functions**

### **Extra Hygiene function**

**9**

You may select this function in order to obtain extra hygiene and a cleaner washing process by altering the water temperature and washing time of the program you have selected.

### **Tablet Detergent function**

**10**

Please use the Tablet Detergent function while using salt, rinse agent and combined deterjents with extra properties.

### **Half Load Function**

**11**

Using the Half load function, three sorts of washing up can be done those being lower basket, upper basket and both baskets.

If you have little amount of dishes in your machine and if you have to wash them, you can also activate the semi-filling function for some programs.

If you have dishes in both baskets, select the half load function and select the position in which both images are highlighted.

If you have dishes only in the upper basket, select the position in which the upper image is illuminated.

Thus, washing up shall be done only on the upper basket of your machine.

If you have dishes only in the lower basket select the position in which the lower image is illuminated. Thus, washing up shall be done only on the lower basket of your machine. In using this feature, make sure that there are no dishes in the upper basket.

### ***Extra Fast Function***

**12**

Washes the dishes with more pressure, thus shortens the time of the selected program and provides economical water usage.

### ***Extra Silent Function***

**13**

Washes the dishes with less pressure, thus provides more sensitive and silent washing.

### ***Extra Drying function***

**14**

With extra drying function, you may add extra drying steps to your program and thus obtain drier dishes.

## ***Warning Indicators***

### ***Salt Level Warning Indicator***

**15**

In order to understand whether the salt in your machine is sufficient or not, please check the salt level warning display. If this display is illuminated, fill the salt section.

### ***Rinse Agent Level Warning Indicator***

**16**

In order to understand whether the rinse agent in your machine is sufficient or not, please check the rinse agent level warning display. If this display is illuminated, fill the rinse agent section.

## Selection of Program and Starting of the Machine

1- Press Power On/Off switch.

**Note:** Select your washing program appropriate for your dishes by the help of the program items page in the user guide.

2- You may select the washing program by using up/down (7,8) selection buttons.

**Note:** You may follow the program time in the time indicator. ( 19 )

3- If necessary, you may select additional functions by using option button (4).  
( 9-10-11-12-13-14 )

4- You may start the programme by pressing the Start/Pause button.

**"Program Activated"** will appear on the display and the selected program will start.



When the program starts, you may see the name of the selected program in the Display information line (21), remaining washing time in the remaining time indicator (19) and the program number of the selected program in the program number indicator (20).



**Note:** Try not to open the door of the machine while it is operating; if you absolutely need to, stop the programme by pressing Start/Pause button.

**"Program Paused"** will appear on the display. Once you see this text, you may open the door. Steam might come out when you open the door – be careful.

You may resume the programme after closing the door and pressing the Start/Pause button again. When you press the Start/Pause button,

**"Program Activated"** will appear on the display.

## Program Follow-up

You can follow the progress by the help of the program follow-up symbols on the display.( 22 - a,b,c,d).



As the washing proceeds, respectively Washing and Drying symbols will be illuminated. When the drying symbol is on, the machine remains silent for about 40-50 minutes.



Do not open the door before the completion indicator light is on. When the programme ends, Completion indicator light is illuminated.



When the program you have selected starts, you may see the estimated remaining time in the time indicator.

**NOTE:** A few minutes after the program finishes and the Completion lamp is illuminated, you may open the door slightly and leave it ajar in order for the drying process to be faster.

**NOTE:** If the machine door is opened or a power failure occurs during washing, the machine will proceed from where it stopped after the door is closed or power is restored.

**NOTE:** If a power cut occurs or if the door is opened during drying, the programme ends. The machine will be ready for selecting a new programme.

**NOTE:** Your machine performs water softening process in accordance with the mains water hardness. For this reason, in some washes, the remaining time near the end of the programme might be different from that indicated in the beginning. The total time of the programme also depends on the room temperature, mains water temperature and amount of dishes.

## Adding Additional Functions to the Program

You may change the program according to your preferences by adding additional functions to the washing program. The washing programs have been designed so as to obtain the best cleaning considering the type of smear, amount of smear and properties of the washing materials. The additional functions were developed in order to save time, water and electricity and thus allow you to wash your dishes more conveniently. For example, if you think your dishes are slightly dirty, you may select the Fast function (12) and make your washing process more economical in terms of time and water.

If you are going to use a multipurpose detergent, you obtain better performance by selecting tablet detergent (10) function.

If you live in a place where electricity is cheaper to use at night, you might select the silent function (13) and wash your dishes more economically and silently; this function was developed also for a more sensitive washing process.

Additional functions are not suitable for every program; you might find below the functions suitable for the programs. For the programs not suitable for functions, you will see that the function indicator is not illuminated.

PROGRAMS	OPTIONS							
	Delay Start	Half Load (3 modes)	Tablet	Child Lock	Extra Fast	Extra Hygiene	Extra Silent	Extra Drying
Prewash	X	X	-	X	-	-	-	-
Jetwash 18	X	X	-	X	-	-	-	-
Quick 30'	X	X	-	X	-	-	-	X
Eco 50°C	X	X	X	X	X	X	X	X
Dual Wash	X	X	X	X	X	X	X	X
Super 50'	X	X	X	X	-	X	-	X
Daily 60	X	X	X	X	X	X	X	X
Auto Intensive 60°/70°C	X	X	X	X	-	X	-	X
Auto Normal 50-60°C	X	X	X	X	-	X	-	X
Auto Delicate 30-50°C	X	X	X	X	-	X	-	X

“-“ Function cannot be selected “x” function can be selected.

\*\* Programmes are indicated generally and might differ among models.

### ***In order to add additional functions to the program;***

- 1-Select the appropriate washing program for your dishes using the up/down buttons (7,8) after pressing the option button.
- 2- Enter the additional functions menu (4) by pressing the option button. After selecting the additional function using up/down buttons (7,8), illuminate the additional function indicators (9-10-11-12-13-14) by pressing the confirmation button.
- 3- You may start the programme by pressing the Start/Standby button.  
"Programme activated" will appear on the display.

Some functions cannot be selected at the same time; please refer to the scheme below

Options	Delay Start	Half Load ( 3 modes )	Tablet	Child Lock	Extra Fast	Extra Hygiene	Extra Silent	Extra Drying
Delay Start		OK	OK	OK	OK	OK	OK	OK
Half Load ( 3 modes )	OK		OK	OK	OK	OK	OK	OK
Tablet	OK	OK		OK	OK	OK	OK	OK
Child Lock	OK	OK	OK		OK	OK	OK	OK
Extra Fast	OK	OK	OK	OK		-	-	OK
Extra Hygiene	OK	OK	OK	OK	-		-	-
Extra Silent	OK	OK	OK	OK	-	-		OK
Extra Drying	OK	OK	OK	OK	OK	-	OK	

### **Changing the Program**

If you want to change a washing programme after it has been started;

- 1- Pause the programme by pressing the Start/Pause (6) button. "Programme paused" will appear on the display.
- 2- Select the desired programme by pressing the selection buttons (7,8).
- 3- You may start the programme by pressing the Start/Pause button again.  
"Programme activated" will appear on the display.

**Note:** The new program starts from the step where the previous program was left.

Note: If you want the new program to start from the beginning, you must first cancel the previous program and then select a new one.

### **Cancelling the Program**

- 1- Hold the Start/pause button (6) for 3 seconds to cancel a program.
  - 2- The display will show an expression ("Program Cancelling ..X") to let you know how many more seconds you have to hold the button. 1 minute after you do this, "Program Finished" will appear.
  - 3- After this warning, you may select an additional function or time setting.
- Note: Depending on the step where the cancelled program was left, there may be detergent leftovers within the machine or on the dishes.



## Settings Menu

In order to enter the Settings Menu, hold the option and delay buttons for 3 seconds. The display will show an expression ("Keep Pressing ..X") to let you know how many more seconds you have to hold the button. When this number is zero, you will see the Menu settings on the display. You may navigate within the menu by using the selection buttons. In order to exit the menu, you may hold the option and delay buttons for 3 seconds like you did when entering the menu or you may select the seventh row in the menu with the confirmation button.

The menu content is as follows:

1. Language
2. Water Hardness
3. Volume
4. Brightness
5. Ecomode
6. Factory Settings
7. Exit Menu ✓

### 1- Language settings

After you enter the menu settings, use up/down selection buttons to select the language. You will see an expression (1.Language: X) in which "X" is the current language. After that, press the confirmation button to activate the language selection and after selecting the new language, save it by pressing the confirmation button again.

Available languages that you can select :

English	Greek	Nederlands	Polish
Turkish	Croatian	Swedish	Czech
French	Russian	Dansk	Slovene
Deutsch	Finnish	Spanish	Hungarian
Italian	Norwegian	Portuguese	

### 2- Water hardness setting

You may find this in the section where water softening setting is explained.( page 15 )

### 3- Volume level

You may adjust the level of your machine's audible alarms here. After entering the menu, select the "3- Volume " by using the selection buttons. Here you will see "Volume:X" (X:L1,L2,L3 ). L1 is the lowest, L3 is the highest volume level. After pressing the confirmation button, activate "X", select the desired noise level and save the selection by pressing the confirmation button once more.

#### 4- Brightness level

You may adjust the level of your machine's display brightness here After entering the menu, select the "4- Brightness" by using the selection buttons. Here you will see "brightness :X" (X:L1,L2,L3 ). L1 is the lowest, L3 is the highest brightness level. select the desired brightness level and save the selection by pressing the confirmation button, activate "X" and confirmation button once more.

#### 5- Eco mode


This mode saves energy by minimizing the display brightness level after 30 seconds of non-operation. After entering the menu, select the "5- Eco mode" by using the selection buttons. Here you will see "Ecomode:X" (X:YES or NO ). After pressing the confirmation button, activate "X"; you might use your machine with Eco mode on or off.

#### 6- Factory Settings


In order to discard all the settings you made and restore the factory settings, select the "6- Factory settings" by using the selection buttons. Here you will see "6.Factory settings:X" (X:yes or no). After pressing the confirmation button, activate " X "; you might save your selection by selecting "Yes" or "No" expression and pressing the confirmation button again.When you restore the factory settings, the machine will return to the following settings:

1- Language : English  
2- Water hardness setting : L3  
3- Volume : L2  
4- Brightness : L2  
5 -Eco Mode : No

#### Child Lock:

You might prevent others from modifying your settings while the machine is in operation. After starting the programme, press the up selection button (7) and down selection button (8) at the same time for 3 seconds. This screen will inform you as to how many seconds you need to hold the buttons by "Keep Pressing..X". When this time is over, the child lock is activated, "Child Lock ON" appears on the screen and the indicator (17 ) is illuminated. When the child lock is active, all the buttons are deactivated.



In order to cancel the child lock, press the up selection button (7) and down selection button (6) at the same time for 3 seconds. This screen will inform you as to how many seconds you need to hold the buttons by "Keep Pressing..X". When this time is over, the child lock is cancelled, "Child Lock OFF" appears on the screen and the indicator(17 ) is off



### Delayed Start:(Snooze)

You may delay the starting time of the selected programme up to 24 hours. You can not make a delay setting after the programme starts. In order for you to be able to make a delay setting, the selected programme needs not to be in operation.

- 1- Press the delay button (5)
- 2- Hour "00:00" is displayed on the display information line (19) and the delay symbol (18) starts flashing.
- 3- You may set the delay time with the selection buttons (7,8) to the desired time. The "▲" button (7) increases the time by 1 hour while "▼" button (8) decreases by 1 hour. By pressing the Start/Pause button, you may start the countdown until the delay time. The delay symbol (18) will continuously be illuminated during this period. Remaining Time/Delay Time (19) indicators display the delay time. After the countdown is over, the selected programme will start. The indicator screen will begin to show the time remaining until the end of the selected programme.

### Changing the programme or function on delay:

Pause the machine by pressing the Start/Pause button; the countdown will stop and the "program paused" and "Delay timer active" appear on screen. If you press the buttons without pausing the machine, you will receive warnings such as "Delay timer active" or "invalid". After pausing the snooze, you may select programmes and add functions to the programme like it was told in the relevant topics. By pressing the Start/Pause button once more, start the countdown until the delay time.

### If you want to cancel or make a new time setting when the machine is on snooze;

If you want to reschedule the delay time, stop the countdown by pressing the start/standby button. Press the delay button to enter the delay menu; set the new Delay time by pressing the selection buttons. Start the countdown by pressing the Start/Standby button.

### If you want to cancel the delay setting, hold the Start/Pause button for 3 seconds.

The display will inform you how many seconds you need to hold the button by "Program Cancelling .. X". This way, the delay countdown is cancelled.

### Warning Messages:

Your machine provides feedbacks while in operation;

**Turn on the Tap**

When above warning is seen;

- 1- Make sure that the water is not cut
- 2- Make sure that the hydrant is open
- 3- If both are true, call the qualified technician.

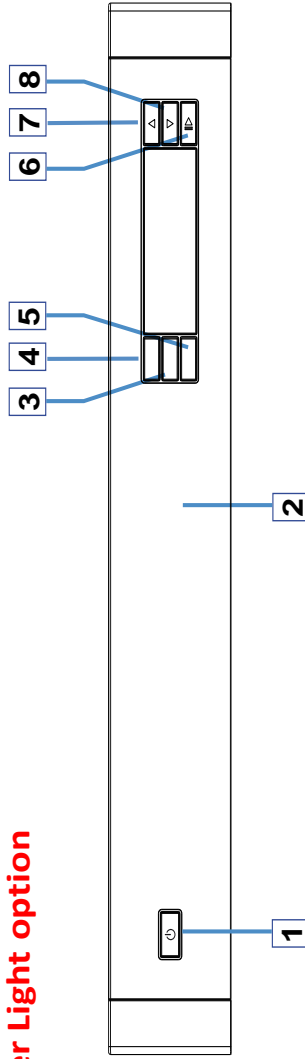
Whenever an error which you cannot fix occurs, above warning will be displayed.

When you see it, call the qualified technician.

**Call Service**

When your machine gives the above warnings, the error codes are specified after the definition. You might find related information in the "FAILURE CODES AND WHAT TO DO IN CASE OF FAILURE" section in your user guide.

## Inner Light option



Machine must be ON position during activation and deactivation of inner light modes.

Note: open or close position of the door is not important

### How to change from "ECO MODE" to "NORMAL MODE" for Inner Light option

- \* First energize the machine via main switch (if it is in OFF position).
- \* Press Option (4) and Delay (5) buttons simultaneously for 3 seconds to enter the "Settings Menu".
- \* Select "5.Eco mode" sub menu by using "up" and "down" buttons and press confirmation button to enter in this sub menu.
- \* In "5. Eco mode" sub menu, select "**Eco mode: NO**" condition and press confirmation button to confirm the selection. Now "Normal Mode" is selected for inner light option.
- \* After "Normal Mode" is selected, the inner light will be ON as long as the machine is energized and machine door is open.

### How to change from "NORMAL MODE" to "ECO MODE" for Inner Light option:

- \* First energize the machine via main switch (if it is in OFF position).
- \* Press Option (4) and Delay (5) buttons simultaneously for 3 seconds to enter the "Settings Menu".
- \* Select "5.Eco mode" sub menu by using "up" and "down" buttons and press confirmation button to enter in this sub menu.
- \* In "5. Eco mode" sub menu, select "**Eco mode: YES**" condition and press confirmation button to confirm the selection. Now "ECO Mode" is selected for inner light option.
- \* After "Eco Mode" is selected, the inner light will be ON for 4min after machine door is opened and then turns OFF.
- If any user intervention occurs such as pressing buttons, Eco Mode cycle starts from beginning (inner light is ON for 4min and then becomes OFF again)

Note: Factory setting for inner light are set to "ECO MODE : YES".

## MAINTENANCE AND CLEANING

***Cleaning the machine in regular intervals prolongs the machine's service life.***

***Oil and lime may accumulate in the machine's washing section. In case of such accumulation;***

-Fill the detergent compartment without loading any dishes into the machine, select a programme that runs at high temperature, and start the machine. In case of insufficiency, use special cleansing material available in the market. (Cleansing material produced special to machines by detergent producers.)

***Cleaning the seals in the machine door,***

-To clean any accumulated residues in the door seals, wipe the seals regularly by using a dampened cloth.

***Cleaning the machine,***

Clean the filters and spray arms at least once a week.

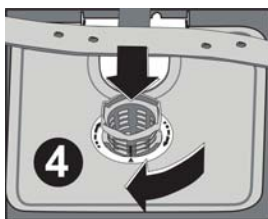
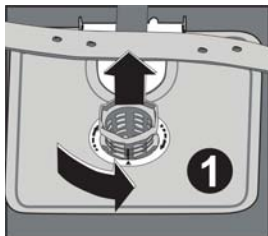
Unplug your machine and turn off its tap before starting the cleaning.

Do not use hard materials when cleaning your machine. Wipe with a fine cleaning material and a dampened cloth.

### ***Filters***

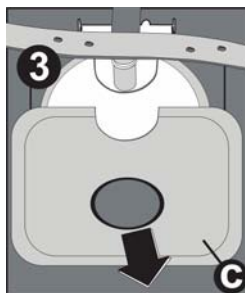
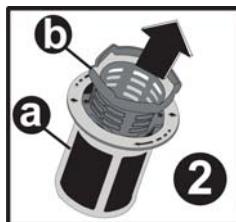
Check if any food wastes have remained on the coarse and fine filters. If any food wastes are left, remove the filters and clean them thoroughly under the water tap.

- a. Micro Filter
- b. Coarse Filter
- c. Metal/Plastic Filter

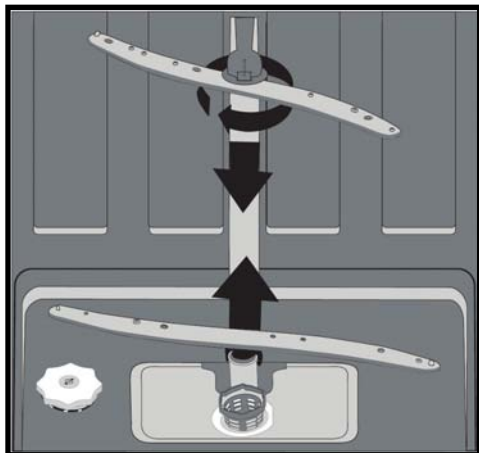


To remove and clean the filter combination, turn it counter clockwise and take it out by lifting upwards. **1**

Pull and remove the metal/plastic filter. **3** Then pull the coarse filter out of the micro filter. **2** Rinse it with lots of water under the tap. Refit the metal/plastic filter. Insert the coarse filter into the micro filter in a way that the marks will correspond to one another. Attach micro filter into the metal/plastic filter and turn to the direction of arrow and it is locked when the arrow on micro filter can be seen from across. **4**



- Never use your dishwasher without any filter.
- Incorrect fitting of the filter will reduce the washing effectiveness.
- Clean filters are very important in terms of the proper running of the machine.



### ***Spray arms***

Check whether or not the holes for the upper and lower spray arms are clogged. If there is any clogging, remove the spray arms and clean them under water.

You can remove the lower spray arm by pulling it upwards, while the upper spray arm nut can be removed by turning the nut to the left.

Be sure that the nut is perfectly tightened when refitting the upper spray arm.

### ***Hose filter***

Water is prevented by the inlet hose filter so as to avoid any damage to your machine because of any contamination (sand, clay, rust etc.) that might be occasionally carried in through the mains water supply or the indoor plumbing, and to forestall such complaints as yellowing and formation of deposits after washing. Check the filter and the hose from time to time and clean them if necessary. To clean the filter, first turn off your tap and then remove the hose. After removing the filter from the hose, clean it under the tap. Insert the cleaned filter back into its place inside the hose. Refit the hose.

## FAILURE CODES AND WHAT TO DO IN CASE OF FAILURE

ERROR CODE	ERROR DESCRIPTION	CONTROL
F5	Inadequate water supply	<ul style="list-style-type: none"> <li>• Make sure the water input tap is totally open and that there is no water cut.</li> <li>• Close the water input tap, separate the water input hose from the tap and clean the filter at the connection end of the hose.</li> <li>• Restart your machine, contact the service if the error resumes.</li> </ul>
F3	Error of continuous water input	<ul style="list-style-type: none"> <li>• Close the tap.</li> <li>• Contact the service.</li> </ul>
F2	The waste water in the machine cannot be discharged.	<ul style="list-style-type: none"> <li>• Water discharge hose is clogged.</li> <li>• The filters of your machine might be clogged.</li> <li>• Power off-on your machine and activate the program cancellation command.</li> <li>• If the error continues, contact the service.</li> </ul>
F8	Heater error	Contact the service.
F1	Alarm is active against water overflow	<ul style="list-style-type: none"> <li>• Power off your machine and close the tap.</li> <li>• Contact the service.</li> </ul>
FE	Faulty electronic card	Contact the service.
F7	Overheating error (temperature in the machine is too high)	Contact the service.
F9	Divisor position error	Contact the service.
F6	Faulty heater sensor	Contact the service.

***If one of program monitor lights is on and start/Pause light is on and off,***

Your machine's door is open, shut the door.

***If the programme won't start***

- Check if the plug is connected.
- Check your indoor fuses.
- Be sure that the water inlet tap is turned on.
- Be sure that you have closed the machine door.
- Be sure that you switched off the machine by pressing the Power On / Off button.
- Be sure that the water inlet filter and the machine filters are not clogged.

***If the control lamps won't go out after a wash operation***

The Power On/Off button is released yet.

***If detergent residues are left in the detergent compartment***

Detergent has been added when the detergent compartment was wet.

***If water is left inside the machine at the end of the programme***

- The water drain hose is clogged or twisted.
- The filters are clogged.
- The programme is not finished yet.

***If the machine stops during a wash operation***

- Power failure.
- Water inlet failure.
- Program can be on standby mode.

***If shaking and hitting noises are heard during a wash operation***

- Dishes placed incorrectly.
- Spray arm hitting the dishes.

***If there are partial food wastes left on the dishes***

- Dishes placed incorrectly into the machine, sprayed water did not reach related places.
- Basket overly loaded.
- Dishes leaning against one another.
- Very small amount of detergent added.
- An unsuitable, rather weak wash programme selected.
- Spray arm clogged with food wastes.
- Filters clogged.
- Filters incorrectly fitted.
- Water drain pump clogged.

***If there are whitish stains on the dishes***

- A very small amount of detergent is being used.
- Rinse aid dosage setting at a very low level.
- No special salt is being used despite the high degree of water hardness.
- Water softener system setting is at a very low level.
- Salt compartment cap not closed well.



***If the dishes won't dry up***

- A programme without a dry operation selected.
- Rinse aid dosage set too low
- Dishes unloaded too fast.

***If there are rust stains on the dishes***

- Stainless-steel quality of the dishes washed is insufficient.
- High rate of salt in the wash water.
- Salt compartment cap not closed well.
- Too much salt spilt into the sides and into the machine while filling it with salt.
- Unhealthy mains grounding.

**Call an authorised service if the problem still persists after the controls or in case of any malfunction not described above.**

<b><i>PRACTICAL AND USEFUL INFORMATION</i></b>
--

**1. Whenever you will not be operating your machine**

- Unplug the machine and then turn the water off.
- Leave the door slightly ajar in order to prevent the formation of unpleasant smells.
- Keep the machine interior clean.

**2. Eliminating water droplets**

- Wash the dishes with the intensive programme.
- Take all of the metal containers in the machine out.
- Do not add detergent.

**3. If you properly place your dishes into the machine, you will be using it in the best way in terms of energy consumption, washing and drying performance.**

**4. Clean all rough waste before you place dirty dishes to the machine.**

**5. Operate the machine after it is completely full.**

**6. Use pre-washing program only when necessary.**

**7. Observe program information and average consumption values table when selecting a program.**

**8. Since the machine will reach high temperatures, it should not be mounted near refrigerator.**

**9. If the appliance is located in a place where the risk of freezing exists, you must completely drain the water that has remained in the machine. Turn off the water tap, disconnect the water inlet hose from the tap and allow the interior water to drain.**

## THE PRODUCT FICHE (Spect)

Supplier's trade mark	GRAM
Supplier's model	OM 60-57 RT / OM 60-57 RT X
Capacity of dishwasher	15
The energy efficiency class	A+++
Annual energy consumption in kWh per year (AEC) ( 280 Cycle ) *	239
Energy consumption (E <sub>c</sub> ) (kWh per cycle)	0,84
Off mode power consumption (W) (P <sub>o</sub> )	0,05
Left on mode power consumption (W) (P <sub>i</sub> )	1,00
Annual water consumption in litres per year (AWC) ( 280 Cycle ) **	2520
Drying efficiency class ***	A
Standard programme name ****	Eco 50°C
Programme time for standard cycle ( min)	176
Noise dB(A)	39
Integrated	Yes

\* Energy consumption **239** kwh per year, based on 280 standard cleaning cycles using cold water fill and the consumption of low power modes. Actual energy consumption will depend on how the appliance is used.

\*\* Water consumption **2520** liters per year based on 280 standard cleaning cycles. Actual water consumption will depend on how appliance is used.

\*\*\*Drying efficiency class **A** on a scale from G(least efficient) to A (most efficient).

\*\*\*\* The **"Eco 50 °C"** is the standard cleaning cycle to which the information in the label and the fiche relates. This programme is suitable to clean normally soiled tableware and it is the most efficient programme in terms of combined energy and water consumption.

### Gram Norge AS

Postboks 833  
NO-1670 Kråkerøy  
Tel.: 22 07 26 30  
[www.gram.no](http://www.gram.no)

### Gram Sverige AB

Smultronbacken 4A  
SE- 135 62 Tyresö  
Tel.: 040 38 08 40  
[www.gram.se](http://www.gram.se)

### Gram Finland OY

PL 4640  
FI-00002 Helsinki  
Tel.: 020 7756 350  
[www.gram.fi](http://www.gram.fi)

Gram A/S . Gejlhavegård 2B . DK-6000 Kolding . +45 73 20 10 00 . [www.gram.dk](http://www.gram.dk)



52157409 R20