

# Tumble Dryer Washing Machine stacking kit installation instructions

## NOTE

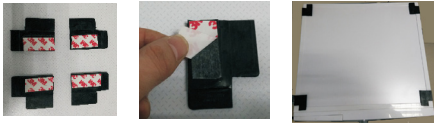


- Due to weight and size it is recommended that at least two people lift and stack the tumble dryer onto the washing machine. Failure to observe this recommendation may result in injury or death.
- Improper installation may lead to an accident.
- When installing the stacking kit, both the washing machine and dryer must be unplugged from the power supply.
- The tumble dryer must be stacked on the washing machine — NEVER stack washing machine on the tumble dryer.



1. Locate the 4 rubber pads provided and tear off protective tapes.

- Attach the rubber pads on top of the washing machine as shown in figure below.



2. Carefully tilt the tumble dryer to one side. Use a screwdriver to unscrew the two screws on each side of the base.

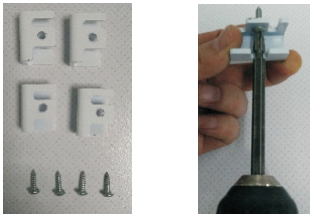
- Save the screws to install the brackets.

There are also two screws on the opposite side.



3. Find 4 brackets and 4 screws provided. Install the brackets in the tumble dryer base as shown in figure below.

- Install 2 brackets on each side to ensure proper balance.



Also install the two brackets on the opposite side



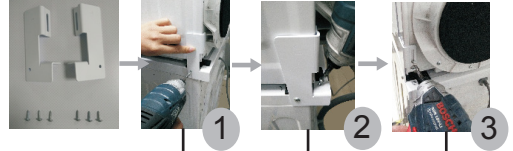
4. Carefully lift and place the tumble dryer on the washing machine. Make sure that the dryer feet stand on the rubber pads and set flush the edges of both appliances.



**Note:** The steps must be carried out by two people. Lifting the tumble dryer by one person is dangerous.



5. Find the two stacking frames and 6 screws provided. Align the brackets with the edge of the dryer and washing machine. Use a screwdriver to tighten the screws.



Use the same procedure to install parts on the opposite side

6. Complete the installation. The images below show the completed installation.

- Make sure that the tumble dryer is stable on the washing machine and does not wobble. Otherwise, adjust the position of the appliances before any use.



**Note:** Use Tumble dryer washing machine stacking kit for compatibles dryers and washing machines only. Before stacking the appliances consult the manufacturer or service representative.